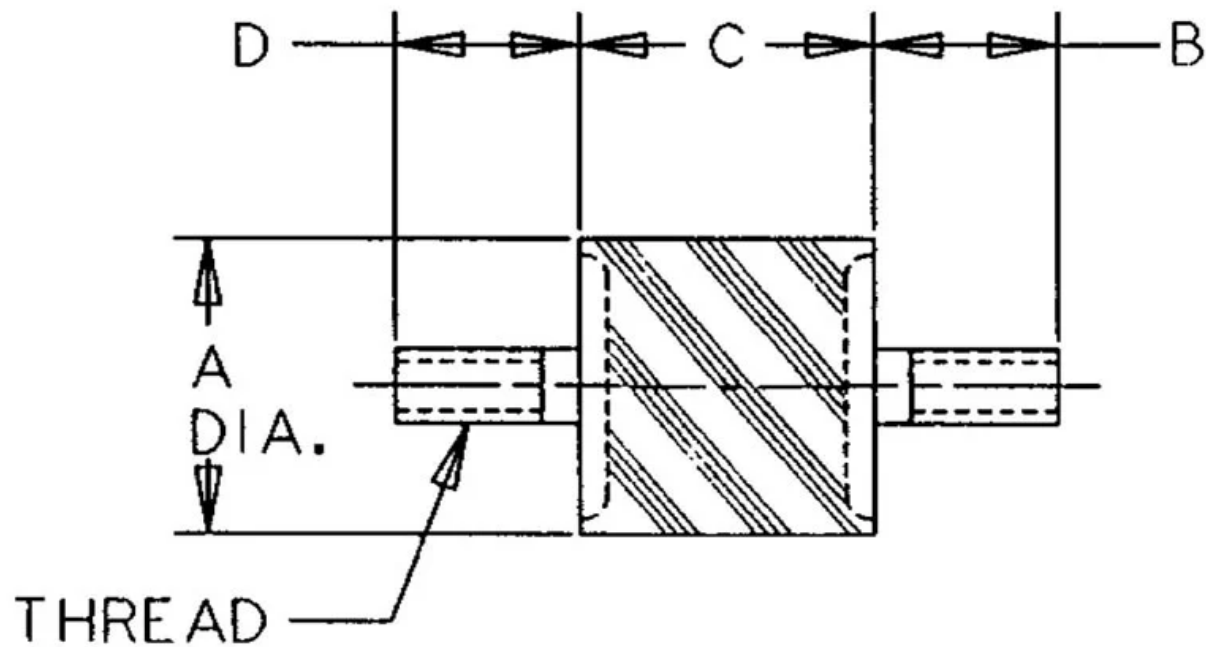


J-4624-618

in Flex-Bolt® Sandwich Mounts (Metric Thread) Type 1



Flex-Bolt® Sandwich Mounts are Manufactured by LORD Corporation.

- Economical.
- Compact and lightweight.
- Easy to install.
- Maintenance-free.
- Three size groups: small, medium and large.

Flex-Bolt® Sandwich Mounts are manufactured by LORNE Corporation.

Flex-Bolt® Sandwich Mounts are designed to protect equipment, machinery and sensitive components against damaging vibration. This family of mounts has excellent capacity for energy control. Constructed with high-strength bonds and specially compounded elastomers, these mounts provide high load carrying capacity and assure long life.

The simple design and unitized construction provide low-cost mounting systems which are compact, lightweight, easy to install and maintenance free.

If you don't see the size you need, contact us - we can help.

Specifications

COMPRESSION STATIC LOAD (LBS)	145
COMPRESSION STATIC LOAD (N)	645
COMPRESSION - SPRING RATE KC (LBS/IN)	1200
COMPRESSION - SPRING RATE KC (N/MM)	210
SHEAR STATIC LOAD (LBS)	22
SHEAR STATIC LOAD (N)	98
SHEAR - SPRING RATE KS (LBS/IN)	220
SHEAR - SPRING RATE KS (N/MM)	39
A (IN)	1
B (IN)	0.75
C (IN)	0.75
D (IN)	0.75
THREAD SIZE	M6
DUROMETER	59
ELASTOMER	Oil Resistant Elastomer - Neoprene
THREAD TYPE	Metric
PRODUCT TYPE	Mounts

GRADE PER SAE J429	4.6
--------------------	-----