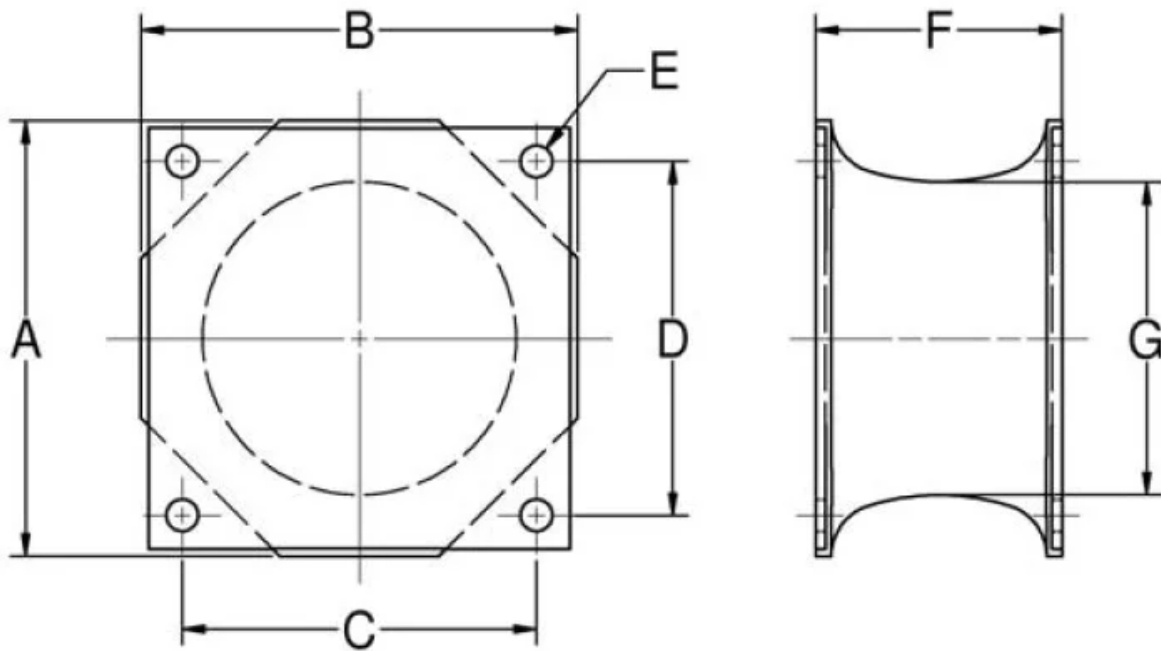


SMA070-0600-3

in Large Shear Mounts



- Economical.
- Compact and lightweight.
- Easy to install.
- Maintenance-free.
- Three size groups: small, medium and large.

Specifications

COMPRESSION STATIC LOAD (LBS)	4900
COMPRESSION STATIC LOAD (N)	21746
COMPRESSION - SPRING RATE KC (LBS/IN)	9400
COMPRESSION - SPRING RATE KC (N/MM)	1646
SHEAR STATIC LOAD (LBS)	600
SHEAR STATIC LOAD (N)	2669
SHEAR - SPRING RATE KS (LBS/IN)	1450
SHEAR - SPRING RATE KS (N/MM)	254
A (IN)	7.12
B (IN)	7.12
C (IN)	5.75
D (IN)	5.75
THREAD SIZE	
E (IN)	0.51
F (IN)	3
F (MM)	76.2
ELASTOMER	Natural Rubber
G (IN)	5.3
G (MM)	134.6
PRODUCT TYPE	Mounts
MANUFACTURER	Lord Corporation
TYPE	5L

FLANGE THICKNESS (IN)	0.19
FLANGE THICKNESS (MM)	4.8