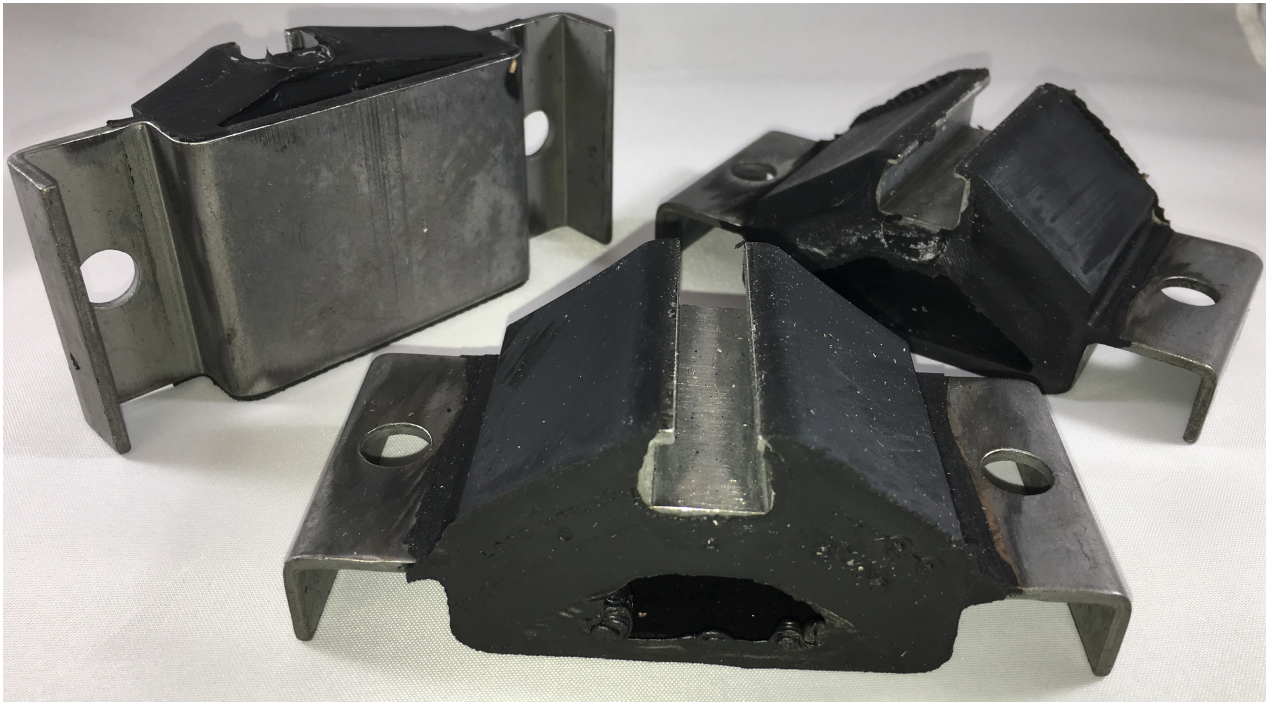
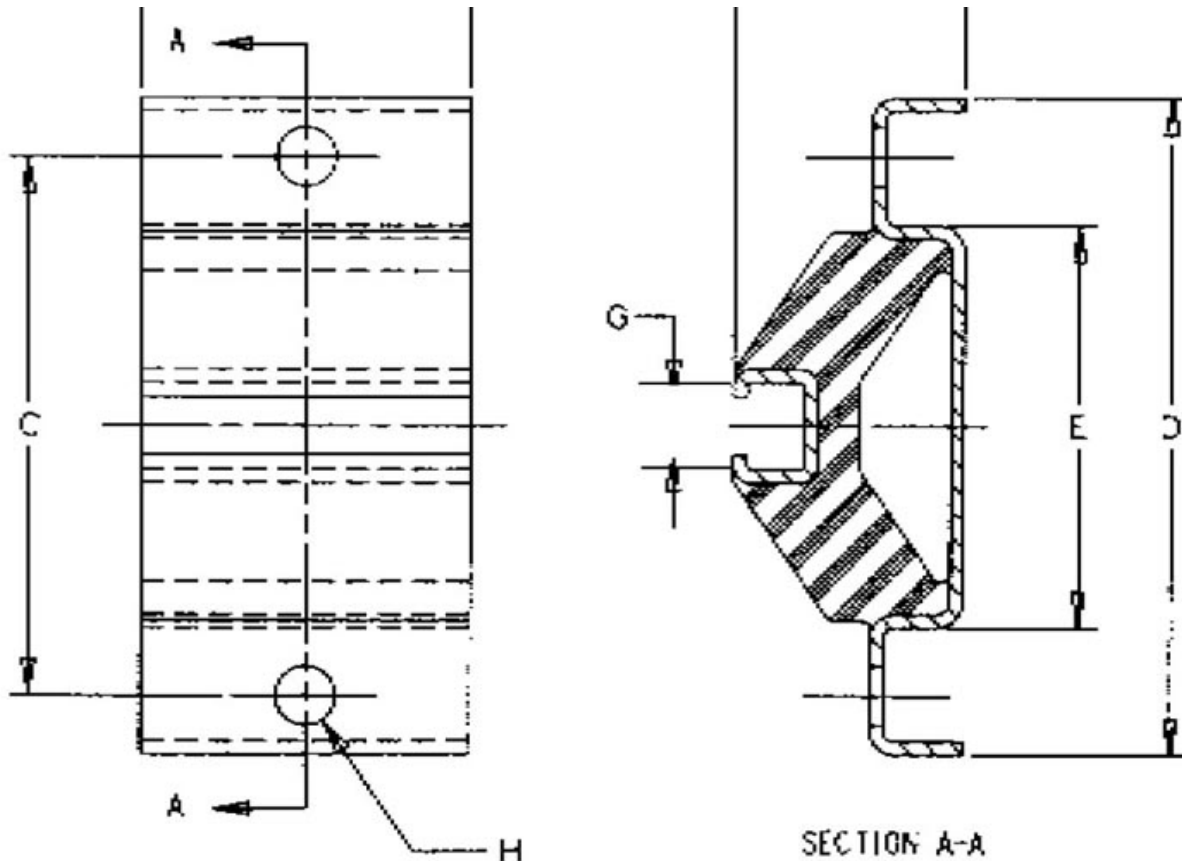


J-2170-1

in Chan-L™ Mount





Lord Machinery Mounts are designed to support heavy equipment and isolate intermittent or continuous vibration.

The result is greater machine accuracy, longer service life, smoother operation and reduced maintenance.

These mounts are available in four types to suit different needs.

Chan-L™ Mounts are recommended for machines where vertical disturbing frequencies are 600 cpm or higher.

Their elastomer-supported channel design features a soft vertical spring rate.

The design incorporates built-in protection against metal-to-metal bottoming.

Typical applications include separating and grading screens and shakeouts.

Provides opening for 3/8" (9.5mm) hex or square head bolt.

One hole centered in each side of mount top plate.

- High-efficiency, multi-directional isolation of low frequency vibration.
- Extremely rugged and require no maintenance.
- Easily installed.
- Long service life.

Specifications

A (IN)	1
--------	---

C (IN)	3.69
D (IN)	4.5
E (IN)	2.75
F (IN)	1.56
F (MM)	39.6
H (IN)	
H (MM)	
MATERIAL	
WEIGHT (LBS/FT)	0.25
WEIGHT (KG)	0.1
G (IN)	0.59
G (MM)	15
MAX AXIAL LOAD RATING (LBS)	50
MAX AXIAL LOAD RATING (N)	222
MAX AXIAL DEFLECTION (IN)	0.25
MAX AXIAL DEFLECTION (MM)	6.4
PRODUCT TYPE	Mounts
MANUFACTURER	Lord Corporation
TYPE	II
FREQUENCY	600