

BUMPERS

FEATURING:

FLAT TOP RECESSED
BUMPERS

ROUNDED TOP RECESSED
BUMPERS

LARGE BUMPER PADS

GROMMET BUMPER A

GROMMET BUMPER B

GROMMET BUMPER C

PLUG BUMPERS

ROUNDED TOP BUMPERS

FLAT TOP BUMPERS

MACHINE SCREWS
BUMPERS

RUBBER HEADED TACK
BUMPERS



Bumpers

RPM's rubber recessed bumpers are used to protect doors or truck bodies from damage. They are also used as feet for large vibrating equipment.

RPM's rubber bumpers are a low cost way to provide a rubber break for many different applications. They provide a great way to protect and isolate any two surfaces.

If you need a special size, contact us and see how we can help!



FEATURING:

- FLAT TOP RECESSED BUMPERS
- ROUNDED TOP RECESSED BUMPERS
- LARGE BUMPER PADS
- GROMMET BUMPER A
- GROMMET BUMPER B
- GROMMET BUMPER C
- PLUG BUMPERS
- ROUNDED TOP BUMPERS
- FLAT TOP BUMPERS
- MACHINE SCREWS BUMPERS
- RUBBER HEADED TACK BUMPERS

RECESSED BUMPERS - Flat Top

Specifications and Dimensions: Table 1

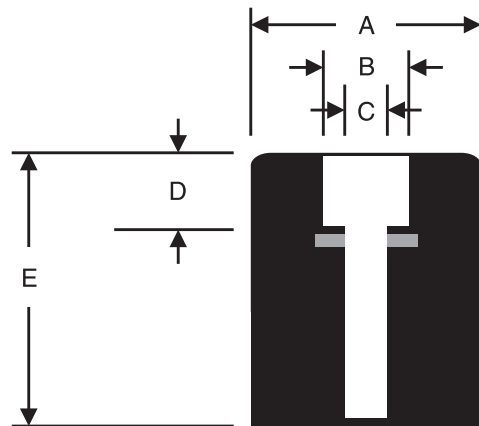
RPM Part Number	A Outside Diameter	B Recess Diameter	C Bore Diameter	D Recess Depth	E Total Height
RBW-0500-01	1/2	1/4	1/8	7/32	7/16
RBW-0625-01	5/8	1/4	1/8	5/32	9/32
RBW-0625-02	5/8	5/16	5/32	5/32	7/16
RBW-0718-01	23/32	1/4	1/8	7/32	7/16
RBW-0750-01	3/4	5/16	1/8	1/4	3/4
RBW-0750-02	3/4	3/8	3/16	1/4	9/16
RBW-1000-01	1	9/16	3/16	3/8	5/8
RBW-1000-02	1	3/8	5/32	1/4	1
RBW-1250-01	1-1/4	3/8	1/4	3/4	1-7/8
RBW-1250-02	1-1/4	3/8	1/4	3/4	1-1/4
RBW-1500-01	1-1/2	1/2	3/16	11/32	5/8
RBW-1500-02	1-1/2	3/4	5/16	11/32	5/8
RBW-1500-03	1-1/2	3/4	1/4	3/8	1-1/2

“W” indicates with Steel Washer. Recessed bumpers available upon request without steel washer inserts.

Measured in inches

Figure 1

Flat Top



RECESSED BUMPERS - Rounded Top

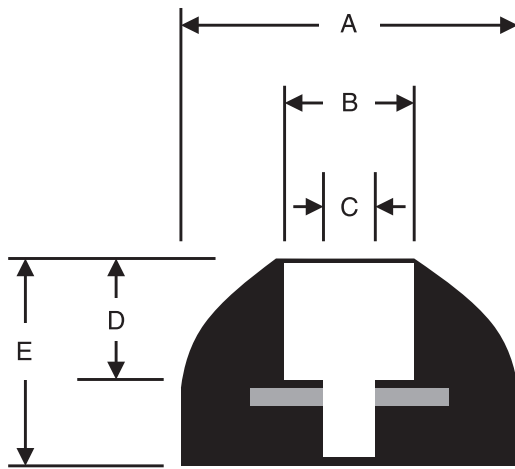
Specifications and Dimensions: Table 1

RPM Part Number	A Outside Diameter	B Recess Diameter	C Bore Diameter	D Recess Depth	E Total Height
RBW-0500-02	1/2	1/4	1/8	5/32	1/4
RBW-0500-03	1/2	7/32	1/8	3/32	3/16
RBW-0937-01	15/16	3/8	3/16	7/32	3/8
RBW-1000-03	1	1/4	1/8	7/16	13/16
RBW-1000-04	1	9/32	5/32	9/32	1/2
RBW-1000-05	1	3/8	3/16	3/16	7/16
RBW-1000-06	1	5/16	5/32	5/8	1

“W” indicates with Steel Washer. Recessed bumpers available upon request without steel washer inserts.

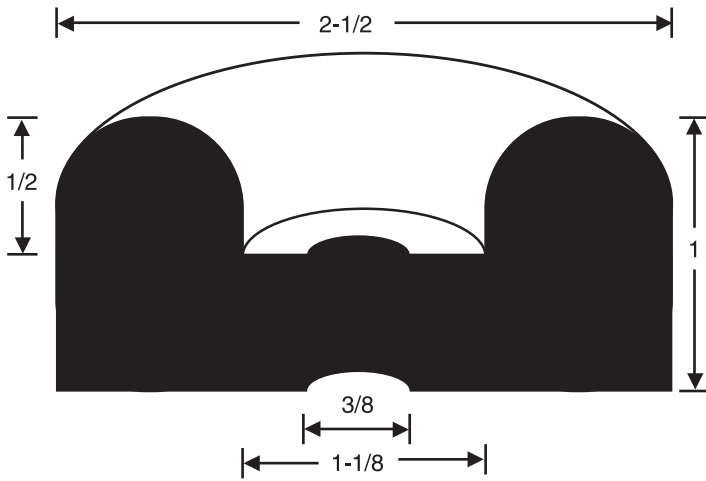
Measured in inches

Figure 1 **Rounded Top**

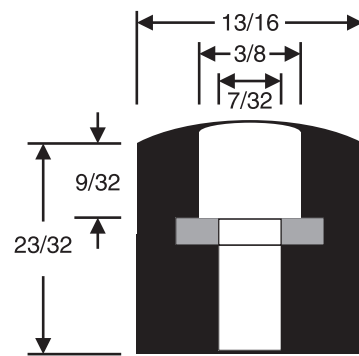


RECESSED BUMPERS/BUMPER PADS

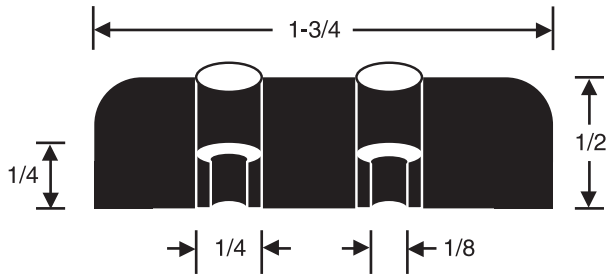
RB-2500-01



RBW-0718-02

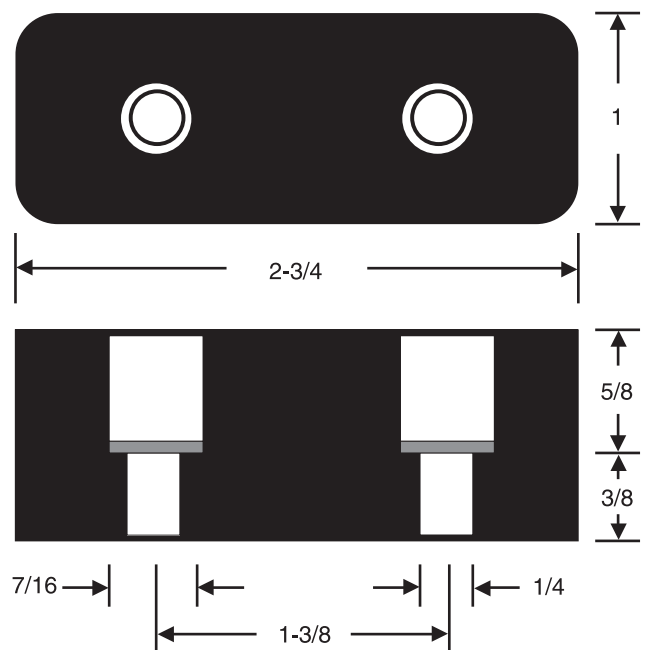


RBW-1750-01



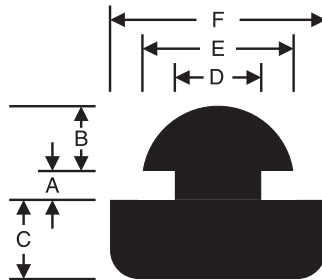
5/8-in. width

RBW-2750-01



Measured in inches

Grommet Bumper A



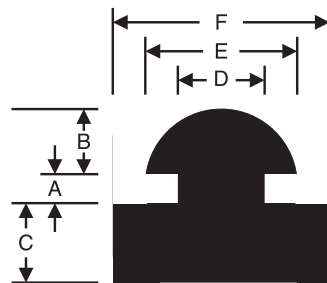
Grommet Bumper A

Specifications and Dimensions: Table 1

RPM Part Number	A Groove Width	B Head Height	C Base Height	D Groove Diameter	E Head Diameter	F Base Diameter
PB-0500-01	1/16	1/8	5/32	1/4	5/16	1/2

Measured in inches

Grommet Bumper B



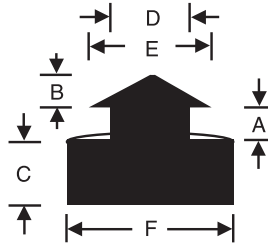
Grommet Bumper B

Specifications and Dimensions: Table 1

RPM Part Number	A Groove Width	B Head Height	C Base Height	D Groove Diameter	E Head Diameter	F Base Diameter
PB-0375-01	1/32	7/64	3/32	5/32	7/32	3/8
PB-0500-02	1/16	1/8	1/4	1/4	5/16	1/2
PB-0562-01	1/16	3/32	5/32	11/32	13/32	9/16
PB-0562-02	1/8	1/8	1/8	1/4	11/32	9/16
PB-0625-01	1/8	11/64	11/32	9/32	7/16	5/8
PB-1000-01	3/16	3/16	5/16	1/2	11/16	1

Measured in inches

Grommet Bumper C



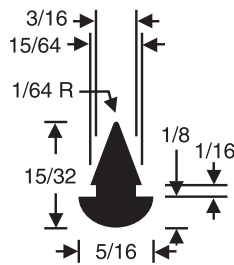
Grommet Bumper C

Specifications and Dimensions: Table 1

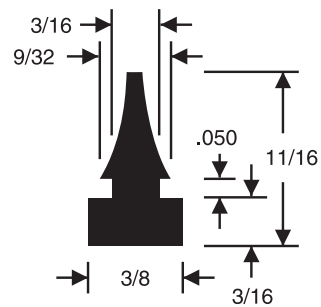
RPM Part Number	A Groove Width	B Head Height	C Base Height	D Groove Diameter	E Head Diameter	F Base Diameter
PB-0313-01	3/64	3/32	1/8	3/16	1/4	5/16
PB-0313-02	1/16	1/16	1/8	3/16	1/4	5/16
PB-0375-02	1/32	1/8	5/32	1/4	5/16	3/8
PB-0437-01	3/64	1/8	3/16	1/4	5/16	7/16
PB-0437-02	3/64	1/8	3/32	1/4	5/16	7/16
PB-0625-02	3/32	1/8	1/4	5/16	3/8	5/8

Measured in inches

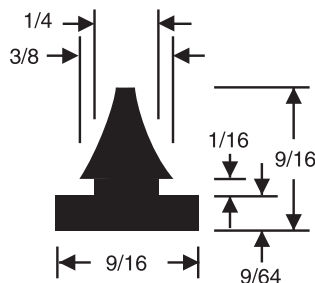
PB-0313-03



PB-0375-06

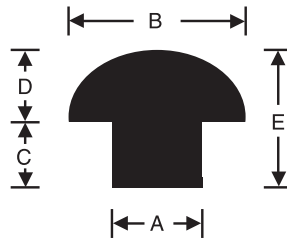


PB-0562-03



Measured in inches

Rounded Top



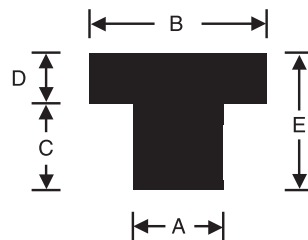
Rounded Top

Specifications and Dimensions: Table 1

RPM Part Number	A Stem Diameter	B Head Diameter	C Stem Length	D Head Height	E Overall Height
PB-0313-04	3/16	11/32	3/16	5/32	11/32
PB-0625-03	5/16	5/8	1/4	5/16	9/16
PB-0750-02	3/8	3/4	3/8	3/8	3/4

Measured in inches

Flat Top



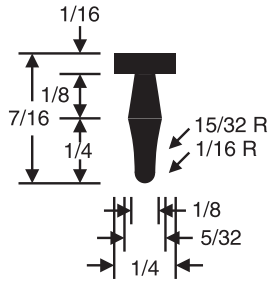
Flat Top

Specifications and Dimensions: Table 1

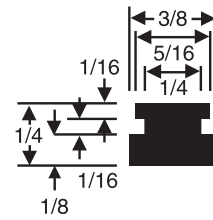
RPM Part Number	A Stem Diameter	B Head Diameter	C Stem Length	D Head Height	E Overall Height
PB-0453-01	19/64	29/64	5/16	5/32	15/32
PB-0500-06	17/64	1/2	17/64	7/64	3/8
PB-0640-01	29/64	41/64	25/64	7/64	1/2
PB-1250-01	3/4	1-1/4	11/16	1/4	15/16

Measured in inches

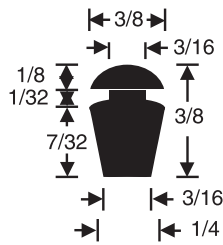
PB-0250-01



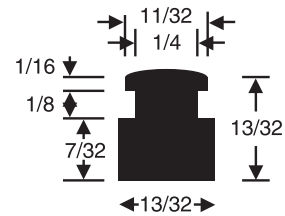
PB-0375-03



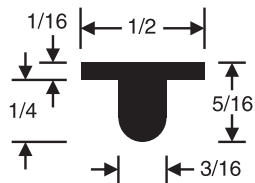
PB-0375-04



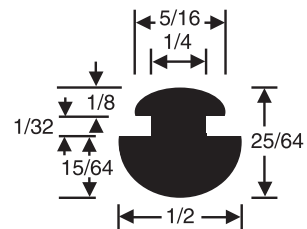
PB-0406-01



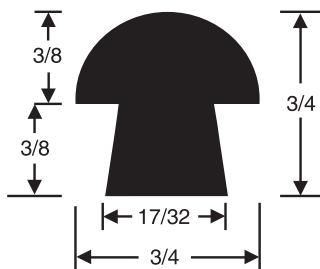
PB-0500-04



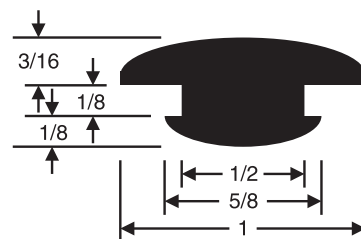
PB-0500-05



PB-0750-01

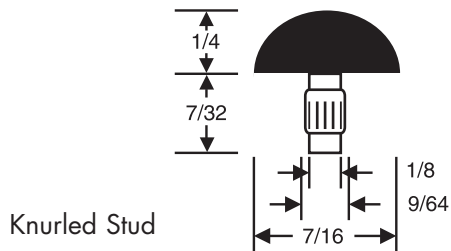


PB-1000-02



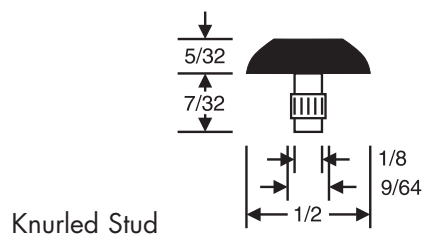
Measured in inches

PB-0437-KS-01



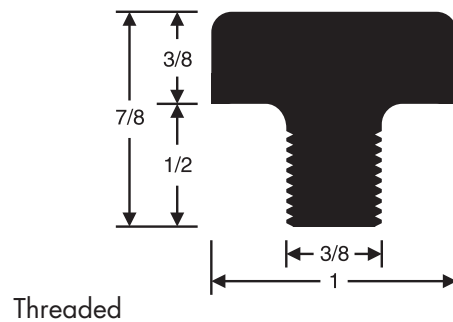
Knurled Stud

PB-0500-KS-01



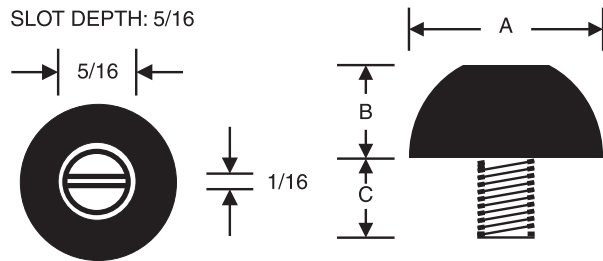
Knurled Stud

PB-1000-TS-01



Threaded

Machine Screws

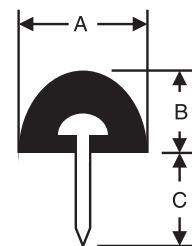


8-32 Thread

RPM Part Number	A Head Diameter	B Head Height	C Screw Height
PB-0750-MS-01	3/4	7/16	3/8
PB-0875-MS-01	7/8	1/2	1/4

Rubber Headed Tack Bumpers









Tack bumpers are available in black or white.



RPM Part Number	A Head Diameter	B Head Height	C Tack Height
TACK-0375-B	3/8	1/4	3/8
TACK-0375-W	3/8	1/4	3/8
TACK-0500-B	1/2	5/16	3/8
TACK-0500-W	1/2	5/16	3/8
TACK-0625-B	5/8	3/8	3/8
TACK-0625-W	5/8	3/8	3/8
TACK-0750-B	3/4	7/16	1/2
TACK-0750-W	3/4	7/16	1/2

Measured in inches

3M Canada Bumpon™ Products are made of a permanently resilient polyurethane polymer formulated especially for its unique high coefficient of friction, non-slip, non-marring features. An aggressive, high tack, pressure sensitive adhesive protected with an easy release liner makes application fast and easy. Available in black, white, grey, brown, clear and semi-transparent.

	RPM Part Number	Width Eng ±0.02 in	Width Metric ±0.5 mm	Height Eng ±0.02 in	Height Metric ±0.5 mm	Type
	SJ-5003	0.44	11.1	0.20	5.0	Hemisphere
	SJ-5008	0.50	12.7	0.12	3.1	Tapered Square
	SJ-5009	0.88	22.3	0.40	10.1	Circular Depressed
	SJ-5012	0.50	12.7	0.14	3.5	Cylindrical
	SJ-5018	0.50	12.7	0.23	5.8	Tapered Square
	SJ-5023	0.81	20.6	0.30	7.6	Tapered Square
	SJ-5027	0.63	16.0	0.31	7.9	Hemisphere
	SJ-5532	1.88	47.7	0.66	16.7	Circular Depressed

UNABLE TO FIND THE PART YOU REQUIRE?

Contact our customer service representative for information on the many additional standard or custom parts we have available.