

## DATA REQUIRED FOR INDUSTRIAL APPLICATION ANALYSIS

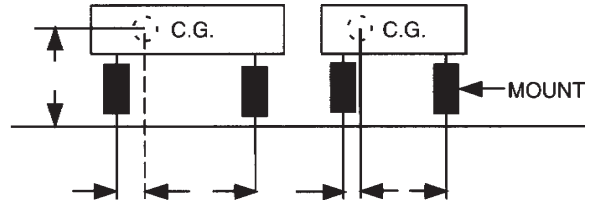
1. Specific name and description of unit: \_\_\_\_\_

2. Total supported weight: \_\_\_\_\_ lbs.

3. Weight distribution or center of gravity location with respect to mounting point:

- Centered  
 Offset (if so, fill in blanks)

Number of mounts: \_\_\_\_\_



4. Disturbing frequency range: \_\_\_\_\_ to \_\_\_\_\_ cpm (or Hz)

5. Primary direction of disturbance: horizontal , vertical , all directions

6. Source of vibration: rotating eccentric weight , rotating machinery , other

7. Vibration isolation desired: \_\_\_\_\_ % min.

8. Impact loads on unit: \_\_\_\_\_ g's, \_\_\_\_\_ direction.

9. Frequency of impact loads: \_\_\_\_\_

10. Sway space limitation: \_\_\_\_\_ in.

11. External forces on mounting system:

Belt or chain pull \_\_\_\_\_ lbs., \_\_\_\_\_ direction.

Distance from C.G.: \_\_\_\_\_ in., torque reaction \_\_\_\_\_ lb.-in.

12. Stationary , or mobile , equipment. If mobile, what type of vehicle?

On-highway , Off-highway .

13. Environmental requirements: Temperature—High \_\_\_\_\_ °F, Low \_\_\_\_\_ °F

Solvent exposure (severe)—Oil , Hydraulic fluid , Gasoline ,

Ozone , Other

Sketch, layout drawing, etc., is desirable.

General comments: