

CB-2203-11 Two-Piece Mounts Cb 2200 Series



Item # CB-2203-11 Two-Piece Mounts Cb 2200 Series

Specifications

| | |
|----------------------------|---------------------------|
| A (in) | 2.522.58 |
| Applicable Steel Washer | J-2049-91 |
| B (in) | 0.6420.672 |
| C (in) | 0.97 |
| D (in) | 2.402.46 |
| E (in) | 1.551.61 |
| Elastomer | Neoprene Oil Resistant |
| F (in) | 0.870.93 |
| F (mm) | 22.9 |
| G (in) | 0.950.99 |
| G (mm) | 24.8 |
| H Thick Support Plate (in) | 0.78 |
| H Thick Support Plate (mm) | 19.8 |



Two-Piece Mounts are designed for applications involving severe dynamic forces in the static load direction, as well as the rebound direction. Travel is limited in both directions by rubber in compression which provides snubbing. These mounts are designed to support engines, cabs and accessory units, accommodate


[Request for Quote](#)
[Contact Us](#)

USA
4392 Broadway
Depew, NY 14043

Canada
2290 Industrial Street
Burlington, Ontario
L7P 1A1

888.842.5668

905.335.5523

info@rpmrubberparts.com




Non-Stock Item, please
contact Lord Corporation for
availability



[Request for Quote](#)

[Contact Us](#)

 **USA**
4392 Broadway
Depew, NY 14043

 **Canada**
2290 Industrial Street
Burlington, Ontario
L7P 1A1

 888.842.5668

 905.335.5523

 info@rpmrubberparts.com



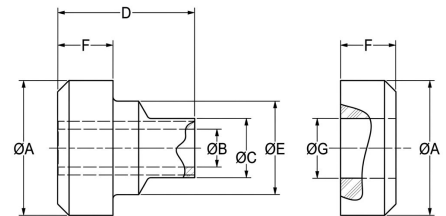
CB-2203-11 Two-Piece Mounts Cb 2200 Series



Item # CB-2203-11 Two-Piece Mounts Cb 2200 Series

Specifications (Continued)

| | |
|---|--------------|
| H Thin Support Plate (in) | 0.84 |
| H Thin Support Plate (mm) | 21.3 |
| Inside Diameter (in) | 0.657 |
| Load/Deflection (lbs/in Thick Support Plate) | 175 at 0.085 |
| Load/Deflection Thick Support Plate (lbs at in) | 175 at 0.085 |
| Outside Diameter (in) | 2.81 |
| Outside Diameter (mm) | 71.4 |
| R (in) | 0.09 |
| R (mm) | 2.3 |
| Recommended Bolt Grade or Class (SAE J1199) | 10.9 |
| Recommended Bolt Grade or Class (SAE J429) | 5/8 |
| Recommended Bolt Size (in) | 5/8 |
| SD (mm) | 38.1 |



Two-Piece Mounts are designed for applications involving severe dynamic forces in the static load direction, as well as the rebound direction. Travel is limited in both directions by rubber in compression which provides snubbing. These mounts are designed to support engines, cabs and accessory units, accommodate



[Request for Quote](#)

[Contact Us](#)

USA
4392 Broadway
Depew, NY 14043

Canada
2290 Industrial Street
Burlington, Ontario
L7P 1A1

888.842.5668

905.335.5523

info@rpmrubberparts.com

Non-Stock Item, please
contact Lord Corporation for
availability



[Request for Quote](#)

[Contact Us](#)

 **USA**
4392 Broadway
Depew, NY 14043

 **Canada**
2290 Industrial Street
Burlington, Ontario
L7P 1A1

 888.842.5668

 905.335.5523

 info@rpmrubberparts.com



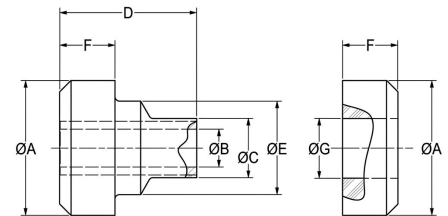
CB-2203-11 Two-Piece Mounts Cb 2200 Series



Item # CB-2203-11 Two-Piece Mounts Cb 2200 Series

Specifications (Continued)

| | |
|--|---------|
| Series | CB-2200 |
| Thickness (in) | 0.188 |
| Thickness (Metric) | 4.8 |
| Thickness (T) Thick Support Plate (in) | 0.875 |
| Thickness (T) Thick Support Plate (mm) | 22.2 |
| Thickness (T) Thin Support Plate (in) | 0.75 |
| Thickness (T) Thin Support Plate (mm) | 19.1 |



Two-Piece Mounts are designed for applications involving severe dynamic forces in the static load direction, as well as the rebound direction. Travel is limited in both directions by rubber in compression which provides snubbing. These mounts are designed to support engines, cabs and accessory units, accommodate



[Request for Quote](#)

[Contact Us](#)

USA
4392 Broadway
Depew, NY 14043

Canada
2290 Industrial Street
Burlington, Ontario
L7P 1A1

888.842.5668

905.335.5523

info@rpmrubberparts.com



Non-Stock Item, please
contact Lord Corporation for
availability




[Request for Quote](#)

[Contact Us](#)

 **USA**
4392 Broadway
Depew, NY 14043

 **Canada**
2290 Industrial Street
Burlington, Ontario
L7P 1A1

 888.842.5668

 905.335.5523

 info@rpmrubberparts.com

