

CB-2205-2 Two-Piece Mounts

Cb 2200 Series



Item # CB-2205-2 Two-Piece Mounts Cb 2200 Series

Specifications

A (in)	4.824.94
Applicable Steel Washer	J-2049-93
B (in)	1.0481.078
C (in)	1.5
D (in)	3.353.41
E (in)	2.522.58
Elastomer	Natural Rubber
F (in)	1.221.28
F (mm)	31.8
G (in)	1.461.52
G (mm)	37.8
H Thick Support Plate (in)	1.06
H Thick Support Plate (mm)	26.9



Two-Piece Mounts are designed for applications involving severe dynamic forces in the static load direction, as well as the rebound direction. Travel is limited in both directions by rubber in compression which provides snubbing. These mounts are designed to support engines, cabs and accessory units, accommodate frame racking and twisting while isolating vibration and absorbing shock. Typical applications for Two-Piece Mounts include on-


[Request for Quote](#)
[Contact Us](#)

USA
4392 Broadway
Depew, NY 14043

Canada
2290 Industrial Street
Burlington, Ontario
L7P 1A1

888.842.5668

905.335.5523

info@rpmrubberparts.com



CB-2205-2 Two-Piece Mounts Cb 2200 Series



Item # CB-2205-2 Two-Piece Mounts Cb 2200 Series

Specifications (Continued)

H Thin Support Plate (in)	1.19
H Thin Support Plate (mm)	30.2
Inside Diameter (in)	1.063
Load/Deflection (lbs/in Thick Support Plate)	1200 at 0.09
Load/Deflection Thick Support Plate (lbs at in)	1200 at 0.09
Outside Diameter (in)	5.25
Outside Diameter (mm)	133.4
R (in)	0.12
R (mm)	3
Recommended Bolt Grade or Class (SAE J1199)	10.9
Recommended Bolt Grade or Class (SAE J429)	1
Recommended Bolt Size (in)	1
SD (mm)	63.5



Two-Piece Mounts are designed for applications involving severe dynamic forces in the static load direction, as well as the rebound direction. Travel is limited in both directions by rubber in compression which provides snubbing. These mounts are designed to support engines, cabs and accessory units, accommodate frame racking and twisting while isolating vibration and absorbing shock. Typical applications for Two-Piece Mounts include on-


[Request for Quote](#)
[Contact Us](#)

USA
4392 Broadway
Depew, NY 14043

Canada
2290 Industrial Street
Burlington, Ontario
L7P 1A1

☎ 888.842.5668

☎ 905.335.5523

✉ info@rpmrubberparts.com



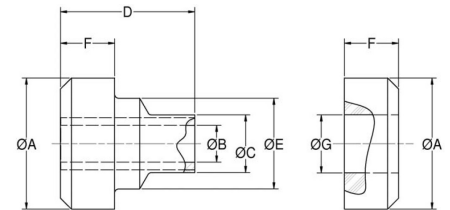
CB-2205-2 Two-Piece Mounts Cb 2200 Series



Item # CB-2205-2 Two-Piece Mounts Cb 2200 Series

Specifications (Continued)

Series	CB-2200
Thickness (in)	0.375
Thickness (Metric)	9.5
Thickness (T) Thick Support Plate (in)	1.25
Thickness (T) Thick Support Plate (mm)	31.8
Thickness (T) Thin Support Plate (in)	1
Thickness (T) Thin Support Plate (mm)	25.4



Two-Piece Mounts are designed for applications involving severe dynamic forces in the static load direction, as well as the rebound direction. Travel is limited in both directions by rubber in compression which provides snubbing. These mounts are designed to support engines, cabs and accessory units, accommodate frame racking and twisting while isolating vibration and absorbing shock. Typical applications for Two-Piece Mounts include on-



[Request for Quote](#)

[Contact Us](#)

USA
4392 Broadway
Depew, NY 14043

Canada
2290 Industrial Street
Burlington, Ontario
L7P 1A1

888.842.5668

905.335.5523

info@rpmrubberparts.com

