

# CB-2205-7 Two-Piece Mounts

## Cb 2200 Series



Item # CB-2205-7 Two-Piece Mounts Cb 2200 Series

## Specifications

A (in)	4.824.94
Applicable Steel Washer	J-2049-93
B (in)	1.0481.078
C (in)	1.5
D (in)	3.353.41
E (in)	2.522.58
Elastomer	Natural Rubber
F (in)	1.221.28
F (mm)	31.8
G (in)	1.461.52
G (mm)	37.8
H Thick Support Plate (in)	1.06
H Thick Support Plate (mm)	26.9



Two-Piece Mounts are designed for applications involving severe dynamic forces in the static load direction, as well as the rebound direction. Travel is limited in both directions by rubber in compression which provides snubbing. These mounts are designed to support engines, cabs and accessory units, accommodate


[Request for Quote](#)
[Contact Us](#)

**USA**  
4392 Broadway  
Depew, NY 14043

**Canada**  
2290 Industrial Street  
Burlington, Ontario  
L7P 1A1

☎ 888.842.5668

☎ 905.335.5523

✉ info@rpmrubberparts.com




Non-Stock Item, please  
contact Lord Corporation for  
availability



[Request for Quote](#)

[Contact Us](#)

 **USA**  
4392 Broadway  
Depew, NY 14043

 **Canada**  
2290 Industrial Street  
Burlington, Ontario  
L7P 1A1

 888.842.5668

 905.335.5523

 [info@rpmrubberparts.com](mailto:info@rpmrubberparts.com)



# CB-2205-7 Two-Piece Mounts

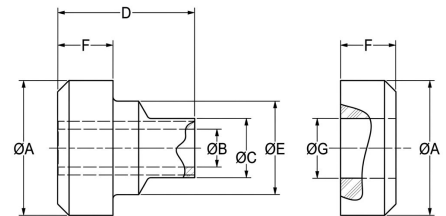
## Cb 2200 Series



Item # CB-2205-7 Two-Piece Mounts Cb 2200 Series

## Specifications (Continued)

H Thin Support Plate (in)	1.19
H Thin Support Plate (mm)	30.2
Inside Diameter (in)	1.063
Load/Deflection (lbs/in Thick Support Plate)	1600 at 0.09
Load/Deflection Thick Support Plate (lbs at in)	1600 at 0.09
Outside Diameter (in)	5.25
Outside Diameter (mm)	133.4
R (in)	0.12
R (mm)	3
Recommended Bolt Grade or Class (SAE J1199)	10.9
Recommended Bolt Grade or Class (SAE J429)	1
Recommended Bolt Size (in)	1
SD (mm)	63.5



Two-Piece Mounts are designed for applications involving severe dynamic forces in the static load direction, as well as the rebound direction. Travel is limited in both directions by rubber in compression which provides snubbing. These mounts are designed to support engines, cabs and accessory units, accommodate


[Request for Quote](#)
[Contact Us](#)

**USA**  
4392 Broadway  
Depew, NY 14043

**Canada**  
2290 Industrial Street  
Burlington, Ontario  
L7P 1A1

☎ 888.842.5668

☎ 905.335.5523

✉ info@rpmrubberparts.com




Non-Stock Item, please  
contact Lord Corporation for  
availability



[Request for Quote](#)

[Contact Us](#)

 **USA**  
4392 Broadway  
Depew, NY 14043

 **Canada**  
2290 Industrial Street  
Burlington, Ontario  
L7P 1A1

 888.842.5668

 905.335.5523

 [info@rpmrubberparts.com](mailto:info@rpmrubberparts.com)



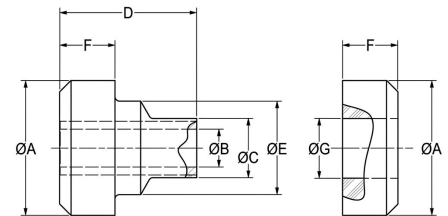
# CB-2205-7 Two-Piece Mounts Cb 2200 Series



Item # CB-2205-7 Two-Piece Mounts Cb 2200 Series

## Specifications (Continued)

Series	CB-2200
Thickness (in)	0.375
Thickness (Metric)	9.5
Thickness (T) Thick Support Plate (in)	1.25
Thickness (T) Thick Support Plate (mm)	31.8
Thickness (T) Thin Support Plate (in)	1
Thickness (T) Thin Support Plate (mm)	25.4



Two-Piece Mounts are designed for applications involving severe dynamic forces in the static load direction, as well as the rebound direction. Travel is limited in both directions by rubber in compression which provides snubbing. These mounts are designed to support engines, cabs and accessory units, accommodate



[Request for Quote](#)

[Contact Us](#)

**USA**  
4392 Broadway  
Depew, NY 14043

**Canada**  
2290 Industrial Street  
Burlington, Ontario  
L7P 1A1

☎ 888.842.5668

☎ 905.335.5523

✉ [info@rpmrubberparts.com](mailto:info@rpmrubberparts.com)



Non-Stock Item, please  
contact Lord Corporation for  
availability



[Request for Quote](#)

[Contact Us](#)

 **USA**  
4392 Broadway  
Depew, NY 14043

 **Canada**  
2290 Industrial Street  
Burlington, Ontario  
L7P 1A1

 888.842.5668

 905.335.5523

 [info@rpmrubberparts.com](mailto:info@rpmrubberparts.com)

