

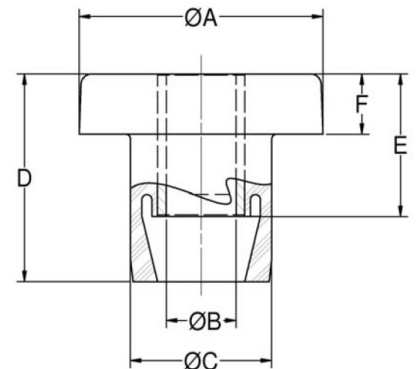
CBA20-300-1 Center Bonded Mounts Cba Series



Item # CBA20-300-1 Center Bonded Mounts Cba Series
 Manufacturer: Parker Lord Corporation

Specifications

| | |
|------------------------------------|---|
| A (in) | 2 |
| Application Engineering Assistance | Frequently vibration isolation problems require a system engineering analysis. Lord has the computer capability as well as specialized programs for analyzing engine/transmission combinations. |
| B (in) | 0.545 |
| C (in) | 1.38 |
| D (in) | 2 |
| E (in) | 1.45 |
| F (in) | 0.75 |
| F (mm) | 19.1 |
| Figure | 2 |
| I (in) | 2.38 |
| I (mm) | 60.5 |
| ID (in) | 0.52 |



Center Bonded Mounts isolate vibration, control shock and reduce noise due to structure borne vibrations. Available in a full range of rated load capacities and able to withstand shock loads of 10 g's, these mounts effectively protect equipment and improve operator comfort. They are ideal for automotive, marine, railroad and industrial markets. Center Bonded Mounts provide flexible suspension systems for mobile, transport-mounted or



[Request for Quote](#)

[Contact Us](#)

USA
 4392 Broadway
 Depew, NY 14043

Canada
 2290 Industrial Street
 Burlington, Ontario
 L7P 1A1

888.842.5668
 905.335.5523
info@rpmrubberparts.com



CBA20-300-1 Center Bonded Mounts Cba Series

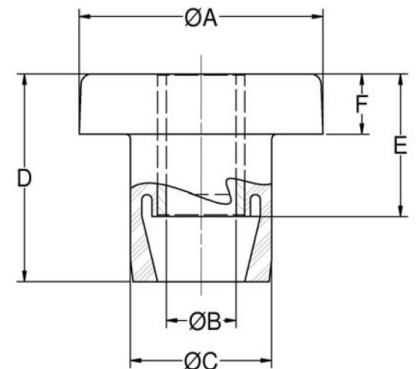


Item # CBA20-300-1 Center Bonded Mounts Cba Series

Manufacturer: Parker Lord Corporation

Specifications (Continued)

| | |
|---|---------------------|
| K (in) | 2.25 |
| K (mm) | 57.2 |
| Manufacturer | Parker LORD |
| Material | High Strength Steel |
| Max Axial Static Load at Deflection (lbs) | 300 at 0.09 |
| Max Axial Static Load Rating (lbs at in) | 300 at 0.09 |
| Max Axial Static Load Rating (Metric) | 1334 at 2.3 |
| Nominal Dynamic Static Spring Rate Ratio | 1.15 |
| R (in) | 0.06 |
| R (mm) | 1.5 |
| Recommended Bolt Grade or Class (SAE J1199) | 10.9 |
| Recommended Bolt Grade or Class (SAE J429) | 8 |
| Recommended Bolt Size (in) | 0.5 |



Center Bonded Mounts isolate vibration, control shock and reduce noise due to structure borne vibrations.

Available in a full range of rated load capacities and able to withstand shock loads of 10 g's, these mounts effectively protect equipment and improve operator comfort. They are ideal for automotive, marine, railroad and industrial markets.

Center Bonded Mounts provide flexible suspension systems for mobile, transport-mounted or



[Request for Quote](#)

[Contact Us](#)

USA
4392 Broadway
Depew, NY 14043

Canada
2290 Industrial Street
Burlington, Ontario
L7P 1A1

888.842.5668

905.335.5523

info@rpmrubberparts.com



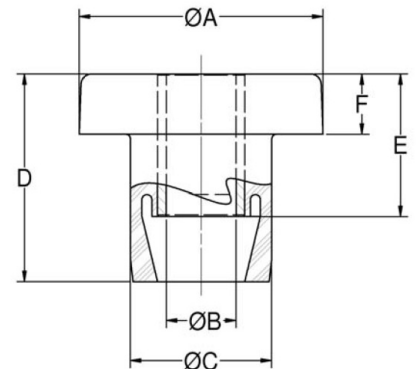
CBA20-300-1 Center Bonded Mounts Cba Series



Item # CBA20-300-1 Center Bonded Mounts Cba Series
 Manufacturer: Parker Lord Corporation

Specifications (Continued)

| | |
|--------------------------|--|
| Recommended Steel Washer | (Head Washer J-2049-52)(Tail Washer J-2049-65) |
| SD (in) | 1.25 |
| SD (mm) | 31.8 |
| Series | CBA - High Torque Series |
| T (in) | 0.5 |
| T (mm) | 12.7 |
| Thickness (in) | 0.125 |
| Thickness (Metric) | 3.2 |



Center Bonded Mounts isolate vibration, control shock and reduce noise due to structure borne vibrations.

Available in a full range of rated load capacities and able to withstand shock loads of 10 g's, these mounts effectively protect equipment and improve operator comfort. They are ideal for automotive, marine, railroad and industrial markets.

Center Bonded Mounts provide flexible suspension systems for mobile, transport-mounted or



[Request for Quote](#)

[Contact Us](#)

USA
 4392 Broadway
 Depew, NY 14043

Canada
 2290 Industrial Street
 Burlington, Ontario
 L7P 1A1

☎ 888.842.5668

☎ 905.335.5523

✉ info@rpmrubberparts.com

