

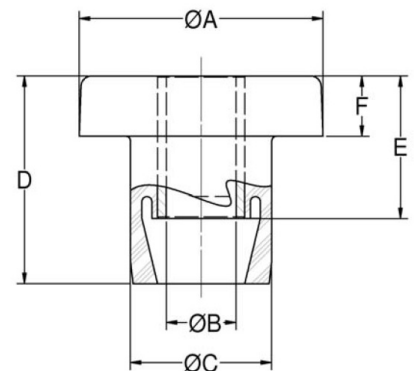
# CBA20-300 Center Bonded Mounts Cba Series



Item # CBA20-300 Center Bonded Mounts Cba Series  
 Manufacturer: Parker Lord Corporation

## Specifications

A (in)	2
Application Engineering Assistance	Frequently vibration isolation problems require a system engineering analysis. Lord has the computer capability as well as specialized programs for analyzing engine/transmission combinations.
B (in)	0.54
C (in)	1.38
D (in)	2
E (in)	1.45
F (in)	0.75
F (mm)	19.1
Figure	1
I (in)	2.38
I (mm)	60.5
ID (in)	0.52



Center Bonded Mounts isolate vibration, control shock and reduce noise due to structure borne vibrations. Available in a full range of rated load capacities and able to withstand shock loads of 10 g's, these mounts effectively protect equipment and improve operator comfort. They are ideal for automotive, marine, railroad and industrial markets. Center Bonded Mounts provide flexible suspension systems for mobile, transport-mounted or



[Request for Quote](#)

[Contact Us](#)

**USA**  
 4392 Broadway  
 Depew, NY 14043

**Canada**  
 2290 Industrial Street  
 Burlington, Ontario  
 L7P 1A1

888.842.5668  
 905.335.5523  
[info@rpmrubberparts.com](mailto:info@rpmrubberparts.com)



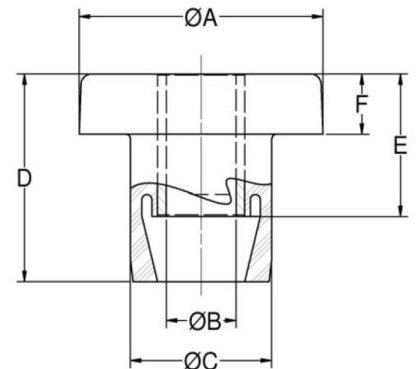
# CBA20-300 Center Bonded Mounts Cba Series



**Item #** CBA20-300 Center Bonded Mounts Cba Series  
**Manufacturer:** Parker Lord Corporation

## Specifications (Continued)

K (in)	2.25
K (mm)	57.2
Manufacturer	Parker LORD
Material	Low Carbon Steel
Max Axial Static Load at Deflection (lbs)	300 at 0.09
Max Axial Static Load Rating (lbs at in)	300 at 0.09
Max Axial Static Load Rating (Metric)	1334 at 2.3
Nominal Dynamic Static Spring Rate Ratio	1.15
R (in)	0.06
R (mm)	1.5
Recommended Bolt Grade or Class (SAE J1199)	5.8
Recommended Bolt Grade or Class (SAE J429)	2
Recommended Bolt Size (in)	0.5



Center Bonded Mounts isolate vibration, control shock and reduce noise due to structure borne vibrations.

Available in a full range of rated load capacities and able to withstand shock loads of 10 g's, these mounts effectively protect equipment and improve operator comfort. They are ideal for automotive, marine, railroad and industrial markets.

Center Bonded Mounts provide flexible suspension systems for mobile, transport-mounted or


[Request for Quote](#)
[Contact Us](#)

**USA**  
 4392 Broadway  
 Depew, NY 14043

**Canada**  
 2290 Industrial Street  
 Burlington, Ontario  
 L7P 1A1

☎ 888.842.5668

☎ 905.335.5523

✉ info@rpmrubberparts.com



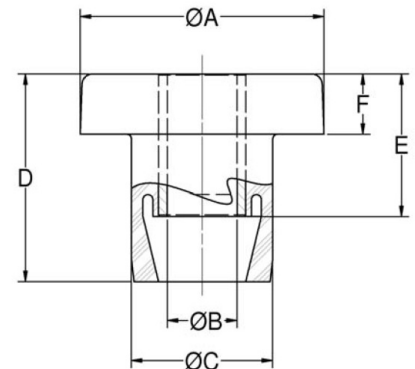
# CBA20-300 Center Bonded Mounts Cba Series



**Item #** CBA20-300 Center Bonded Mounts Cba Series  
**Manufacturer:** Parker Lord Corporation

## Specifications (Continued)

Recommended Steel Washer	(Head Washer J-2049-52)(Tail Washer J-2049-65)
SD (in)	1.25
SD (mm)	31.8
Series	CBA
T (in)	0.5
T (mm)	12.7
Thickness (in)	0.125
Thickness (Metric)	3.2



Center Bonded Mounts isolate vibration, control shock and reduce noise due to structure borne vibrations.

Available in a full range of rated load capacities and able to withstand shock loads of 10 g's, these mounts effectively protect equipment and improve operator comfort. They are ideal for automotive, marine, railroad and industrial markets.

Center Bonded Mounts provide flexible suspension systems for mobile, transport-mounted or



[Request for Quote](#)

[Contact Us](#)

**USA**  
 4392 Broadway  
 Depew, NY 14043

**Canada**  
 2290 Industrial Street  
 Burlington, Ontario  
 L7P 1A1

☎ 888.842.5668

☎ 905.335.5523

✉ [info@rpmrubberparts.com](mailto:info@rpmrubberparts.com)

