

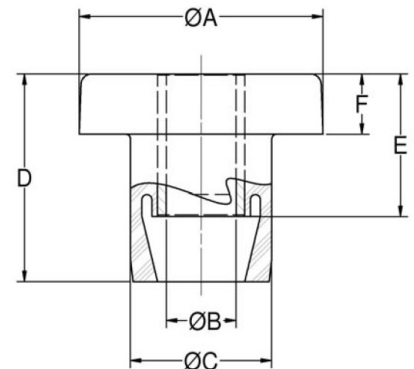
CBA24-500 Center Bonded Mounts Cba Series



Item # CBA24-500 Center Bonded Mounts Cba Series
 Manufacturer: Parker Lord Corporation

Specifications

A (in)	2.35
Application Engineering Assistance	Frequently vibration isolation problems require a system engineering analysis. Lord has the computer capability as well as specialized programs for analyzing engine/transmission combinations.
B (in)	0.657
C (in)	1.5
D (in)	2.11
E (in)	1.5
F (in)	0.69
F (mm)	17.5
Figure	1
I (in)	2.75
I (mm)	69.9
ID (in)	0.64



Center Bonded Mounts isolate vibration, control shock and reduce noise due to structure borne vibrations. Available in a full range of rated load capacities and able to withstand shock loads of 10 g's, these mounts effectively protect equipment and improve operator comfort. They are ideal for automotive, marine, railroad and industrial markets. Center Bonded Mounts provide flexible suspension systems for mobile, transport-mounted or



[Request for Quote](#)

[Contact Us](#)

USA
 4392 Broadway
 Depew, NY 14043

Canada
 2290 Industrial Street
 Burlington, Ontario
 L7P 1A1

888.842.5668
 905.335.5523
 info@rpmrubberparts.com



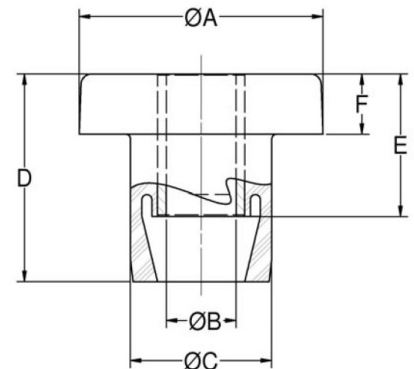
CBA24-500 Center Bonded Mounts Cba Series



Item # CBA24-500 Center Bonded Mounts Cba Series
Manufacturer: Parker Lord Corporation

Specifications (Continued)

K (in)	2.5
K (mm)	63.5
Manufacturer	Parker LORD
Material	Low Carbon Steel
Max Axial Static Load at Deflection (lbs)	500 at 0.09
Max Axial Static Load Rating (lbs at in)	500 at 0.09
Max Axial Static Load Rating (Metric)	2224 at 2.3
Nominal Dynamic Static Spring Rate Ratio	1.15
R (in)	0.06
R (mm)	1.5
Recommended Bolt Grade or Class (SAE J1199)	5.8
Recommended Bolt Grade or Class (SAE J429)	2
Recommended Bolt Size (in)	5/8



Center Bonded Mounts isolate vibration, control shock and reduce noise due to structure borne vibrations.

Available in a full range of rated load capacities and able to withstand shock loads of 10 g's, these mounts effectively protect equipment and improve operator comfort. They are ideal for automotive, marine, railroad and industrial markets.

Center Bonded Mounts provide flexible suspension systems for mobile, transport-mounted or


[Request for Quote](#)
[Contact Us](#)

USA
 4392 Broadway
 Depew, NY 14043

Canada
 2290 Industrial Street
 Burlington, Ontario
 L7P 1A1

☎ 888.842.5668

☎ 905.335.5523

✉ info@rpmrubberparts.com



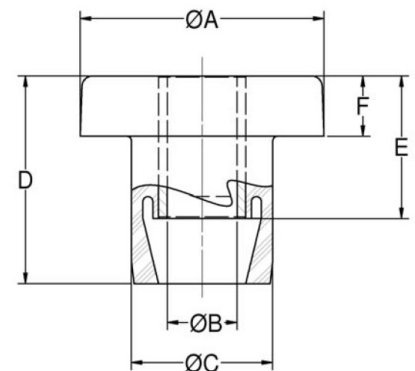
CBA24-500 Center Bonded Mounts Cba Series



Item # CBA24-500 Center Bonded Mounts Cba Series
Manufacturer: Parker Lord Corporation

Specifications (Continued)

Recommended Steel Washer	(Head Washer J-2049-53)(Tail Washer J-2049-67)
SD (in)	1.38
SD (mm)	35.1
Series	CBA
T (in)	0.62
T (mm)	15.7
Thickness (in)	0.125
Thickness (Metric)	3.2



Center Bonded Mounts isolate vibration, control shock and reduce noise due to structure borne vibrations.

Available in a full range of rated load capacities and able to withstand shock loads of 10 g's, these mounts effectively protect equipment and improve operator comfort. They are ideal for automotive, marine, railroad and industrial markets.

Center Bonded Mounts provide flexible suspension systems for mobile, transport-mounted or



[Request for Quote](#)

[Contact Us](#)

USA
 4392 Broadway
 Depew, NY 14043

Canada
 2290 Industrial Street
 Burlington, Ontario
 L7P 1A1

☎ 888.842.5668

☎ 905.335.5523

✉ info@rpmrubberparts.com

