

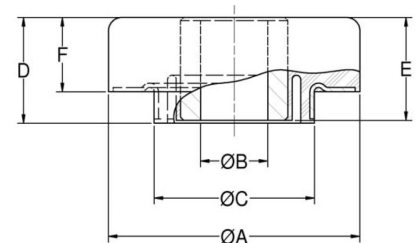
# CBB35-2-7 Two-Piece Mounts Cbb Cbc Series



**Item #** CBB35-2-7 Two-Piece Mounts Cbb Cbc Series  
**Manufacturer:** Parker Lord Corporation

## Specifications

<b>A (in)</b>	<b>3.5</b>
<b>Applicable Steel Washer</b>	<b>J-2049-72</b>
<b>B (in)</b>	<b>0.938</b>
<b>C (in)</b>	<b>2.24</b>
<b>D (in)</b>	<b>1.48</b>
<b>E (in)</b>	<b>1.44</b>
<b>F (in)</b>	<b>1.04</b>
<b>F (mm)</b>	<b>26.4</b>
<b>Figure</b>	<b>1 &amp; 2</b>
<b>G (in)</b>	<b>0.94</b>
<b>G (mm)</b>	<b>23.9</b>
<b>ID (in)</b>	<b>0.95</b>
<b>ID (mm)</b>	<b>24.1</b>



Two-Piece Mounts are designed for applications involving severe dynamic forces in the static load direction, as well as the rebound direction. Travel is limited in both directions by rubber in compression which provides snubbing. These mounts are designed to support engines, cabs and accessory units, accommodate frame racking and twisting while isolating vibration and absorbing shock.


[Request for Quote](#)
[Contact Us](#)

**USA**  
4392 Broadway  
Depew, NY 14043

**Canada**  
2290 Industrial Street  
Burlington, Ontario  
L7P 1A1

☎ 888.842.5668

☎ 905.335.5523

✉ info@rpmrubberparts.com



# CBB35-2-7 Two-Piece Mounts Cbb Cbc Series

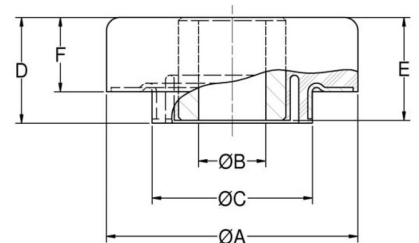


Item # CBB35-2-7 Two-Piece Mounts Cbb Cbc Series

Manufacturer: Parker Lord Corporation

## Specifications (Continued)

Manufacturer	Parker LORD
Material	Low Carbon Steel
Max Axial Static Load at Deflection (lbs)	440 at 0.05
Max Axial Static Load Rating at Deflection (lbs/in)	440 at 0.05
Max Axial Static Load Rating at Deflection (N/mm)	1960 at 1.27
Recommended Bolt Grade or Class (SAE J1199)	10.9
Recommended Bolt Grade or Class (SAE J429)	8
Recommended Bolt Size (in)	7/8
SD (in)	2.26
SD (mm)	57.5
Series	Armored Series
T (in)	1
T (mm)	25.4



Two-Piece Mounts are designed for applications involving severe dynamic forces in the static load direction, as well as the rebound direction. Travel is limited in both directions by rubber in compression which provides snubbing. These mounts are designed to support engines, cabs and accessory units, accommodate frame racking and twisting while isolating vibration and absorbing shock.


[Request for Quote](#)
[Contact Us](#)

**USA**  
4392 Broadway  
Depew, NY 14043

**Canada**  
2290 Industrial Street  
Burlington, Ontario  
L7P 1A1

888.842.5668

905.335.5523

info@rpmrubberparts.com



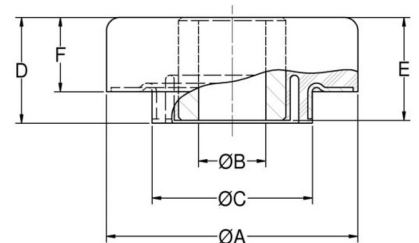
# CBB35-2-7 Two-Piece Mounts Cbb Cbc Series



**Item #** CBB35-2-7 Two-Piece Mounts Cbb Cbc Series  
**Manufacturer:** Parker Lord Corporation

## Specifications (Continued)

WD (in)	4
WD (mm)	101.6
WT (in)	0.134
WT (mm)	3.4



Two-Piece Mounts are designed for applications involving severe dynamic forces in the static load direction, as well as the rebound direction. Travel is limited in both directions by rubber in compression which provides snubbing. These mounts are designed to support engines, cabs and accessory units, accommodate frame racking and twisting while isolating vibration and absorbing shock.



[Request for Quote](#)

[Contact Us](#)

**USA**  
4392 Broadway  
Depew, NY 14043

**Canada**  
2290 Industrial Street  
Burlington, Ontario  
L7P 1A1

888.842.5668

905.335.5523

[info@rpmrubberparts.com](mailto:info@rpmrubberparts.com)

