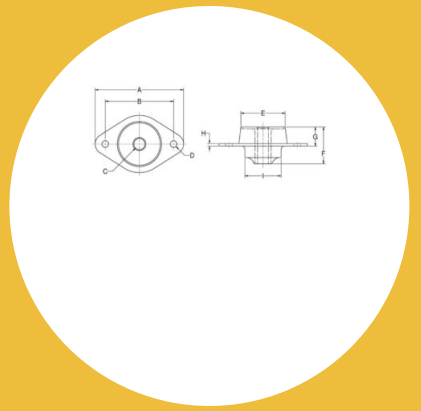


# FCM44-120 Safetied Tube Form Series



Item # FCM44-120 Safetied Tube Form Series

## Specifications

| Manufacturer                                       | RPM Mechanical Inc. |
|--|---------------------|
| A (in)   | 4.5                 |
| A (mm)   | 114.3               |
| Axial Static Deflection at Nominal Load (Imperial) | 0.14                |
| Axial Static Deflection at Nominal Load (Metric)   | 3.5                 |
| B (in)   | 3.54                |
| B (mm)   | 89.9                |
| C (in)   | 0.47                |
| C (mm)   | 11.7                |
| D (in)   | 0.41                |
| D (mm)   | 10.3                |
| E (in)   | 1.89                |
| E (mm)   | 47.8                |

- Center Bonded Mounts isolate vibration, control shock and reduce noise due to structure borne vibrations.
- Available in a full range of rated load capacities and able to withstand shock loads of 10 g's, these mounts effectively protect equipment and improve operator comfort. They are ideal for automotive, marine, railroad and industrial markets.

Center Bonded Mounts provide flexible suspension systems for mobile, transport-mounted or portable equipment. Typical applications include engines, cabs, fuel tanks, pumps, air conditioning units, compressors and industrial machinery. Non-Stock Item



[Request for Quote](#)

[Contact Us](#)

**USA**  
4392 Broadway  
Depew, NY 14043

**Canada**  
2290 Industrial Street  
Burlington, Ontario  
L7P 1A1

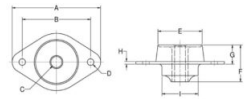
888.842.5668

905.335.5523

[info@rpmrubberparts.com](mailto:info@rpmrubberparts.com)



# FCM44-120 Safetied Tube Form Series



Item # FCM44-120 Safetied Tube Form Series

## Specifications (Continued)

|                                     |        |
|-------------------------------------|--------|
| F (in)                              | 1.75   |
| F (mm)                              | 44.4   |
| G (in)                              | 0.99   |
| G (mm)                              | 25.1   |
| I (in)                              | 2      |
| I (mm)                              | 50.8   |
| Max Radial Static Load Rating (lbs) | 264.56 |
| Max Radial Static Load Rating (kg)  | 120    |

- Center Bonded Mounts isolate vibration, control shock and reduce noise due to structure borne vibrations.
- Available in a full range of rated load capacities and able to withstand shock loads of 10 g's, these mounts effectively protect equipment and improve operator comfort. They are ideal for automotive, marine, railroad and industrial markets.

Center Bonded Mounts provide flexible suspension systems for mobile, transport-mounted or portable equipment. Typical applications include engines, cabs, fuel tanks, pumps, air conditioning units, compressors and industrial machinery. Non-Stock Item


[Request for Quote](#)
[Contact Us](#)

**USA**  
4392 Broadway  
Depew, NY 14043

**Canada**  
2290 Industrial Street  
Burlington, Ontario  
L7P 1A1

☎ 888.842.5668

☎ 905.335.5523

✉ info@rpmrubberparts.com

