

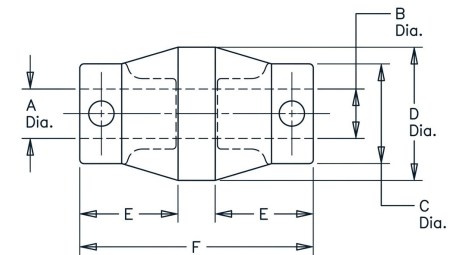
J-1211-4-4 Dynaflex® Shear Type Couplings



Item # J-1211-4-4 Dynaflex® Shear Type Couplings
 Manufacturer: Parker Lord Corporation

Specifications

Bolt Thread Size	0.5
Bore Diameter (A) (in)	0.625
C (in)	1
D Ref (in)	1.38
E Ref (in)	0.91
F (in)	2.25
Horse Power (1750 RPM) (hp)	1/3
Set Screw Size	1/4 to 20
Static Torsional Stiffness (lb/in)	0.87
Torque Rating (lb-in)	13
Torque Rating (lb/in)	13
Typical Applications	Shear-type flexible couplings are useful in many small equipment driveline applications. Multi-directional misalignment capabilities make them ideally suited for fractional horsepower drivelines de



For Low Frequency Vibration Isolation and Misalignment Accommodation Compact, one-piece flexible couplings economically constructed to isolate low- frequency vibration and accommodate multi-directional misalignment.

Large Selection of Standard Sizes
 Fractional horsepower



[Request for Quote](#)

[Contact Us](#)

USA
 4392 Broadway
 Depew, NY 14043

Canada
 2290 Industrial Street
 Burlington, Ontario
 L7P 1A1

888.842.5668
 905.335.5523
info@rpmrubberparts.com



Compact, one-piece coupling construction is convenient for small equipment with fractional horsepower requirements.

Torsional deflection at rated torque assures excellent vibration isolation. Specified torque rating allows 15° angular deflection for excellent vibration isolation.


Max. recommended Misalignments-1/32 in. parallel, 2° angular.

Non-Stock Item, please contact



[Request for Quote](#)


[Contact Us](#)

 **USA**
4392 Broadway
Depew, NY 14043

 **Canada**
2290 Industrial Street
Burlington, Ontario
L7P 1A1

 888.842.5668

 905.335.5523

 info@rpmrubberparts.com

