

# J-20595-1 Center Bonded Mounts Safetied Tube Form Series

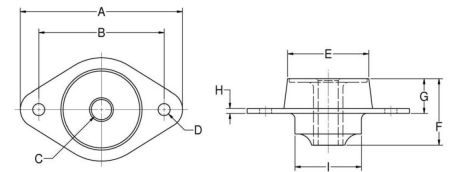


Item # J-20595-1 Center Bonded Mounts Safetied Tube Form Series

Manufacturer: Parker Lord Corporation

## Specifications

A (in)	5.25
A (mm)	133.4
B (mm)	108
C (mm)	17.4
D (mm)	10.3
E (mm)	69.9
Bolt Size	M16
Axial Static Deflection at Nominal Load (Imperial)	0.1
Axial Static Deflection at Nominal Load (Metric)	2.5
B (in)	4.25
C (in)	0.687
D (in)	0.406
E (in)	2.75



Center Bonded Mounts isolate vibration, control shock and reduce noise due to structure borne vibrations.

Available in a full range of rated load capacities and able to withstand shock loads of 10 g's, these mounts effectively protect equipment and improve operator comfort. They are ideal for automotive, marine, railroad and industrial markets.

Center Bonded Mounts provide flexible suspension systems for mobile, transport-mounted or portable equipment. Typical applications include engines, cabs, fuel tanks, pumps, air conditioning units, compressors and industrial


[Request for Quote](#)
[Contact Us](#)

**USA**  
4392 Broadway  
Depew, NY 14043

**Canada**  
2290 Industrial Street  
Burlington, Ontario  
L7P 1A1

☎ 888.842.5668

☎ 905.335.5523

✉ info@rpmrubberparts.com



# J-20595-1 Center Bonded Mounts Safetied Tube Form Series

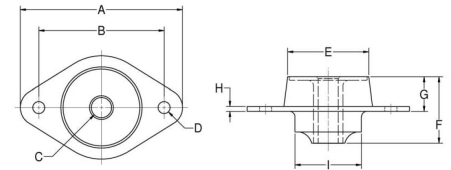


Item # J-20595-1 Center Bonded Mounts Safetied Tube Form Series

Manufacturer: Parker Lord Corporation

## Specifications (Continued)

Elastomer	Natural Rubber
F (in)	2.25
F (mm)	57.2
G (in)	1.18
G (mm)	30
I (in)	2.25
I (mm)	57.2
Inside Diameter (in)	0.64
Manufacturer	Parker LORD
Max Axial Load Rating (lbs)	480
Max Axial Load Rating (Metric)	2135
Max Axial Static Load at Deflection (Metric)	2135
Max Radial Static Load Rating (lbs)	320



Center Bonded Mounts isolate vibration, control shock and reduce noise due to structure borne vibrations.

Available in a full range of rated load capacities and able to withstand shock loads of 10 g's, these mounts effectively protect equipment and improve operator comfort. They are ideal for automotive, marine, railroad and industrial markets.

Center Bonded Mounts provide flexible suspension systems for mobile, transport-mounted or portable equipment. Typical applications include engines, cabs, fuel tanks, pumps, air conditioning units, compressors and industrial



[Request for Quote](#)

[Contact Us](#)

**USA**  
4392 Broadway  
Depew, NY 14043

**Canada**  
2290 Industrial Street  
Burlington, Ontario  
L7P 1A1

888.842.5668

905.335.5523

[info@rpmrubberparts.com](mailto:info@rpmrubberparts.com)

# J-20595-1 Center Bonded Mounts Safetied Tube Form Series

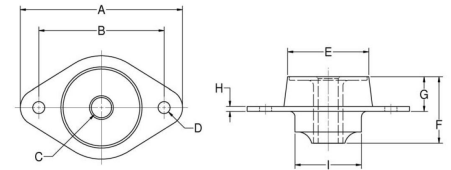


Item # J-20595-1 Center Bonded Mounts Safetied Tube Form Series

Manufacturer: Parker Lord Corporation

## Specifications (Continued)

Max Radial Static Load Rating (kg)	1423
Nominal Axial Static Load Rating (Imperial)	320
Nominal Axial Static Load Rating (Metric)	1423
Nominal Radial Static Load Rating (Imperial)	160
Nominal Radial Static Load Rating (Metric)	712
Outside Diameter (in)	2.25
Outside Diameter (mm)	57.2
Recommended Bolt Size (in)	5/8
SD (in)	2.62
SD (mm)	66.5
Series	Safetied Tube Form
T (in)	0.69
T (mm)	17.5



Center Bonded Mounts isolate vibration, control shock and reduce noise due to structure borne vibrations.

Available in a full range of rated load capacities and able to withstand shock loads of 10 g's, these mounts effectively protect equipment and improve operator comfort. They are ideal for automotive, marine, railroad and industrial markets.

Center Bonded Mounts provide flexible suspension systems for mobile, transport-mounted or portable equipment. Typical applications include engines, cabs, fuel tanks, pumps, air conditioning units, compressors and industrial



[Request for Quote](#)

[Contact Us](#)

**USA**  
4392 Broadway  
Depew, NY 14043

**Canada**  
2290 Industrial Street  
Burlington, Ontario  
L7P 1A1

888.842.5668

905.335.5523

[info@rpmrubberparts.com](mailto:info@rpmrubberparts.com)



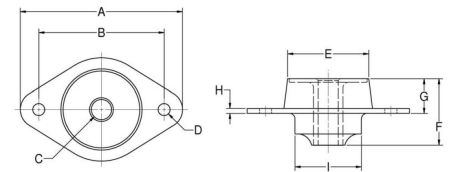
# J-20595-1 Center Bonded Mounts Safetied Tube Form Series



**Item #** J-20595-1 Center Bonded Mounts Safetied Tube Form Series  
**Manufacturer:** Parker Lord Corporation

## Specifications (Continued)

Thickness (in)	0.125
Thickness (Metric)	3.2



Center Bonded Mounts isolate vibration, control shock and reduce noise due to structure borne vibrations.

Available in a full range of rated load capacities and able to withstand shock loads of 10 g's, these mounts effectively protect equipment and improve operator comfort. They are ideal for automotive, marine, railroad and industrial markets.

Center Bonded Mounts provide flexible suspension systems for mobile, transport-mounted or portable equipment. Typical applications include engines, cabs, fuel tanks, pumps, air conditioning units, compressors and industrial



[Request for Quote](#)

[Contact Us](#)

**USA**  
 4392 Broadway  
 Depew, NY 14043

**Canada**  
 2290 Industrial Street  
 Burlington, Ontario  
 L7P 1A1

☎ 888.842.5668

☎ 905.335.5523

✉ [info@rpmrubberparts.com](mailto:info@rpmrubberparts.com)

