

J-20595-15 Center Bonded Mounts Safetied Tube Form Series

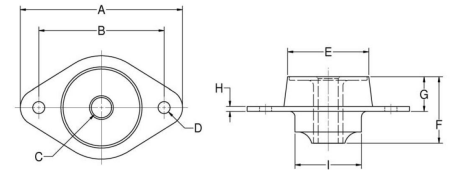


Item # J-20595-15 Center Bonded Mounts Safetied Tube Form Series

Manufacturer: Parker Lord Corporation

Specifications

A (in)	5.25
A (mm)	133.4
B (mm)	108
C (mm)	17.4
D (mm)	10.3
E (mm)	69.9
Bolt Size	M16
Axial Static Deflection at Nominal Load (Imperial)	0.1
Axial Static Deflection at Nominal Load (Metric)	2.5
B (in)	4.25
C (in)	0.687
D (in)	0.406
E (in)	2.75



Center Bonded Mounts isolate vibration, control shock and reduce noise due to structure borne vibrations.

Available in a full range of rated load capacities and able to withstand shock loads of 10 g's, these mounts effectively protect equipment and improve operator comfort. They are ideal for automotive, marine, railroad and industrial markets.

Center Bonded Mounts provide flexible suspension systems for mobile, transport-mounted or portable equipment. Typical applications include engines, cabs, fuel tanks, pumps, air conditioning units, compressors and industrial



[Request for Quote](#)

[Contact Us](#)

USA
4392 Broadway
Depew, NY 14043

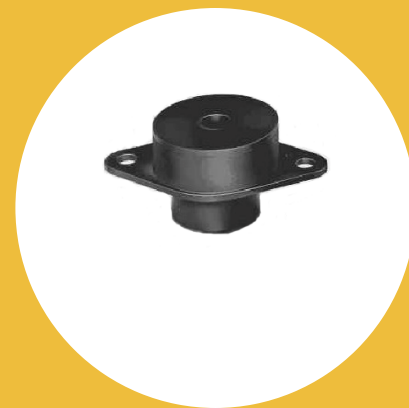
Canada
2290 Industrial Street
Burlington, Ontario
L7P 1A1

888.842.5668

905.335.5523

info@rpmrubberparts.com

J-20595-15 Center Bonded Mounts Safetied Tube Form Series

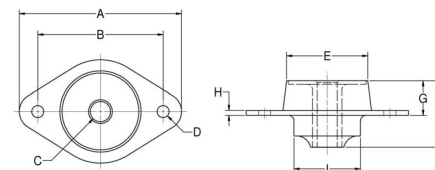


Item # J-20595-15 Center Bonded Mounts Safetied Tube Form Series

Manufacturer: Parker Lord Corporation

Specifications (Continued)

Elastomer	Oil Resistant Neoprene
F (in)	2.25
F (mm)	57.2
G (in)	1.18
G (mm)	30
I (in)	2.25
I (mm)	57.2
Inside Diameter (in)	0.64
Manufacturer	Parker LORD
Max Axial Load Rating (lbs)	1020
Max Axial Load Rating (Metric)	4537
Max Axial Static Load at Deflection (Metric)	4537
Max Radial Static Load Rating (lbs)	680



Center Bonded Mounts isolate vibration, control shock and reduce noise due to structure borne vibrations.

Available in a full range of rated load capacities and able to withstand shock loads of 10 g's, these mounts effectively protect equipment and improve operator comfort. They are ideal for automotive, marine, railroad and industrial markets.

Center Bonded Mounts provide flexible suspension systems for mobile, transport-mounted or portable equipment. Typical applications include engines, cabs, fuel tanks, pumps, air conditioning units, compressors and industrial



[Request for Quote](#)

[Contact Us](#)

USA
4392 Broadway
Depew, NY 14043

Canada
2290 Industrial Street
Burlington, Ontario
L7P 1A1

888.842.5668

905.335.5523

info@rpmrubberparts.com

J-20595-15 Center Bonded Mounts Safetied Tube Form Series

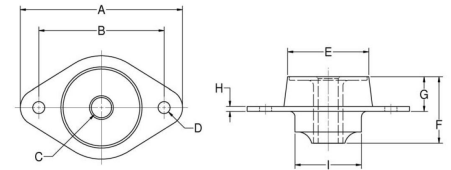


Item # J-20595-15 Center Bonded Mounts Safetied Tube Form Series

Manufacturer: Parker Lord Corporation

Specifications (Continued)

Max Radial Static Load Rating (kg)	3025
Nominal Axial Static Load Rating (Imperial)	680
Nominal Axial Static Load Rating (Metric)	3025
Nominal Radial Static Load Rating (Imperial)	340
Nominal Radial Static Load Rating (Metric)	1512
Outside Diameter (in)	2.25
Outside Diameter (mm)	57.2
Recommended Bolt Size (in)	5/8
SD (in)	2.62
SD (mm)	66.5
Series	Safetied Tube Form
T (in)	0.69
T (mm)	17.5



Center Bonded Mounts isolate vibration, control shock and reduce noise due to structure borne vibrations.

Available in a full range of rated load capacities and able to withstand shock loads of 10 g's, these mounts effectively protect equipment and improve operator comfort. They are ideal for automotive, marine, railroad and industrial markets.

Center Bonded Mounts provide flexible suspension systems for mobile, transport-mounted or portable equipment. Typical applications include engines, cabs, fuel tanks, pumps, air conditioning units, compressors and industrial



[Request for Quote](#)

[Contact Us](#)

USA
4392 Broadway
Depew, NY 14043

Canada
2290 Industrial Street
Burlington, Ontario
L7P 1A1

888.842.5668

905.335.5523

info@rpmrubberparts.com

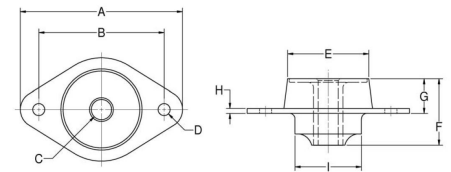
J-20595-15 Center Bonded Mounts Safetied Tube Form Series



Item # J-20595-15 Center Bonded Mounts Safetied Tube Form Series
 Manufacturer: Parker Lord Corporation

Specifications (Continued)

Thickness (in)	0.125
Thickness (Metric)	3.2



Center Bonded Mounts isolate vibration, control shock and reduce noise due to structure borne vibrations.

Available in a full range of rated load capacities and able to withstand shock loads of 10 g's, these mounts effectively protect equipment and improve operator comfort. They are ideal for automotive, marine, railroad and industrial markets.

Center Bonded Mounts provide flexible suspension systems for mobile, transport-mounted or portable equipment. Typical applications include engines, cabs, fuel tanks, pumps, air conditioning units, compressors and industrial



[Request for Quote](#)

[Contact Us](#)

USA
 4392 Broadway
 Depew, NY 14043

Canada
 2290 Industrial Street
 Burlington, Ontario
 L7P 1A1

888.842.5668

905.335.5523

info@rpmrubberparts.com

