

J-2173-1 Chan-L™ Mount

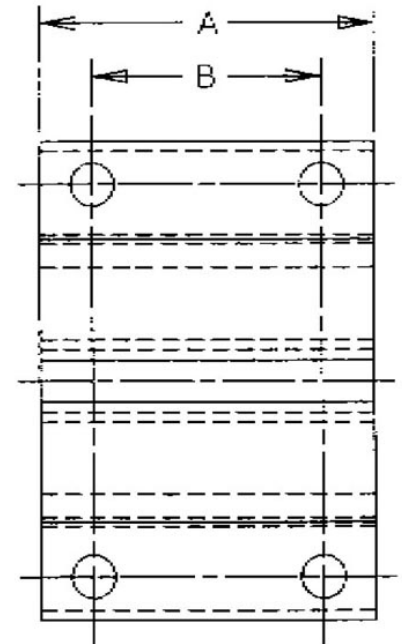


Item # J-2173-1 Chan-L™ Mount

Manufacturer: Parker Lord Corporation

Specifications

A (in)	8
B (in)	6
C (in)	3.69
D (in)	4.5
E (in)	2.75
F (in)	1.53
F (mm)	38.9
Frequency	600
G (in)	0.59
G (mm)	15
Manufacturer	Parker LORD
Max Axial Deflection (in)	0.25
Max Axial Deflection (Metric)	6.4



Lord Machinery Mounts are designed to support heavy equipment and isolate intermittent or continuous vibration. The result is greater machine accuracy and longer


[Request for Quote](#)
[Contact Us](#)

USA
4392 Broadway
Depew, NY 14043

Canada
2290 Industrial Street
Burlington, Ontario
L7P 1A1

☎ 888.842.5668

☎ 905.335.5523

✉ info@rpmrubberparts.com



elastomer-supported channel design features a soft vertical spring rate. The design incorporates built-in protection against metal-to-metal bottoming. Typical applications include separating and grading screens and shakeouts. Provides opening for 3/8" (9.5mm) hex or square head bolt.



[Request for Quote](#)


[Contact Us](#)

 **USA**
4392 Broadway
Depew, NY 14043

 **Canada**
2290 Industrial Street
Burlington, Ontario
L7P 1A1

 888.842.5668

 905.335.5523

 info@rpmrubberparts.com



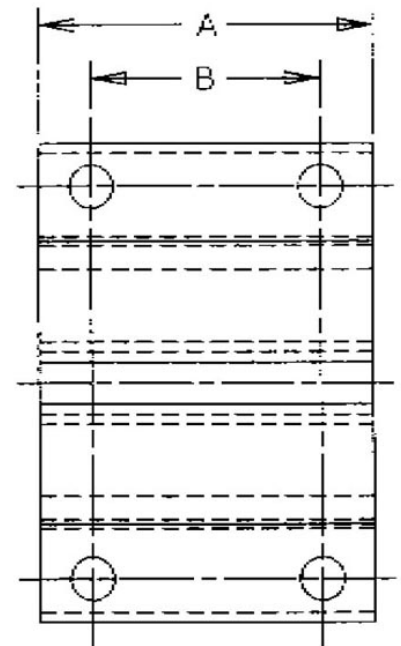
J-2173-1 Chan-L™ Mount



Item # J-2173-1 Chan-L™ Mount
Manufacturer: Parker Lord Corporation

Specifications (Continued)

Max Axial Load Rating (lbs)	400
Max Axial Load Rating (Metric)	1779
Types	I
Weight (lbs/ft)	2.16
Weight (Metric)	1



Lord Machinery Mounts are designed to support heavy equipment and isolate intermittent or continuous vibration. The result is greater machine accuracy and longer



[Request for Quote](#)

[Contact Us](#)

USA
 4392 Broadway
 Depew, NY 14043

Canada
 2290 Industrial Street
 Burlington, Ontario
 L7P 1A1

☎ 888.842.5668
 ☎ 905.335.5523
 ✉ info@rpmrubberparts.com



elastomer-supported channel design features a soft vertical spring rate. The design incorporates built-in protection against metal-to-metal bottoming. Typical applications include separating and grading screens and shakeouts. Provides opening for 3/8" (9.5mm) hex or square head bolt.



[Request for Quote](#)

[Contact Us](#)

 **USA**
4392 Broadway
Depew, NY 14043

 **Canada**
2290 Industrial Street
Burlington, Ontario
L7P 1A1

 888.842.5668

 905.335.5523

 info@rpmrubberparts.com

