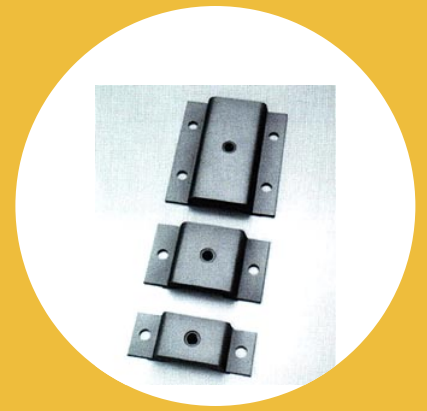


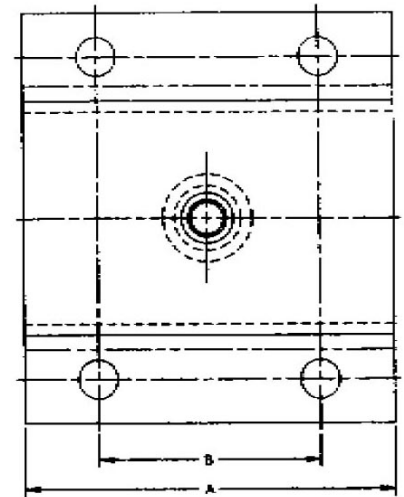
J-2866-1 Industrial Shock Mounts



Item # J-2866-1 Industrial Shock Mounts
Manufacturer: Parker Lord Corporation

Specifications

A (in)	8
B (in)	4
D (in)	1.19
Diameter (C) (in)	0.656
Diameter (C) (mm)	16.7
F (in)	5.5
F (mm)	139.7
G (in)	7
G (mm)	177.8
Manufacturer	Parker LORD
Material	Neoprene Elastomer
Max Axial Deflection (in)	0.3
Max Axial Deflection (Metric)	0.762



Lord Machinery Mounts are designed to support heavy equipment and isolate intermittent or continuous vibration.

The result is greater machine accuracy, longer service life, smoother operation and reduced maintenance.

These mounts are available in


[Request for Quote](#)
[Contact Us](#)

USA
 4392 Broadway
 Depew, NY 14043

Canada
 2290 Industrial Street
 Burlington, Ontario
 L7P 1A1

☎ 888.842.5668

☎ 905.335.5523

✉ info@rpmrubberparts.com




machines are protected from impact disturbances which could hamper their performance.

Worker comfort is increased, and building structures need less maintenance.



[Request for Quote](#)


[Contact Us](#)

 **USA**
4392 Broadway
Depew, NY 14043

 **Canada**
2290 Industrial Street
Burlington, Ontario
L7P 1A1

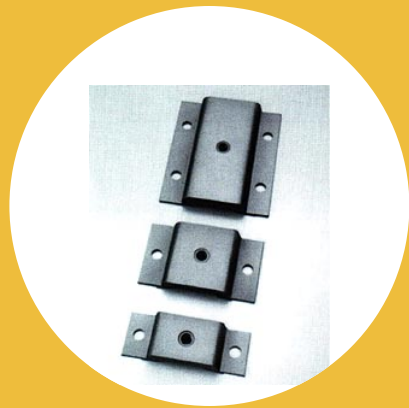
 888.842.5668

 905.335.5523

 info@rpmrubberparts.com



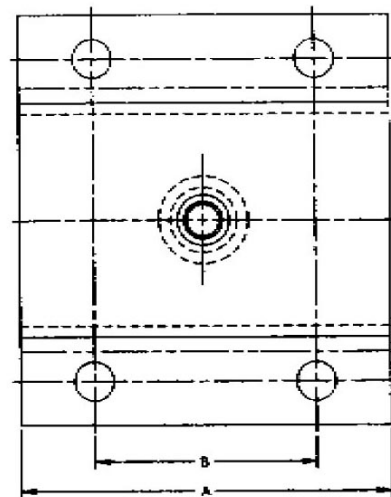
J-2866-1 Industrial Shock Mounts



Item # J-2866-1 Industrial Shock Mounts
Manufacturer: Parker Lord Corporation

Specifications (Continued)

Max Axial Load Rating (lbs)	3000 to 7500
Max Axial Load Rating (Metric)	13345 to 33362
Types	2



Lord Machinery Mounts are designed to support heavy equipment and isolate intermittent or continuous vibration.

The result is greater machine accuracy, longer service life, smoother operation and reduced maintenance.

These mounts are available in



[Request for Quote](#)

[Contact Us](#)

USA
4392 Broadway
Depew, NY 14043

Canada
2290 Industrial Street
Burlington, Ontario
L7P 1A1

888.842.5668

905.335.5523

info@rpmrubberparts.com




machines are protected from impact disturbances which could hamper their performance.

Worker comfort is increased, and building structures need less maintenance.



[Request for Quote](#)


[Contact Us](#)

 **USA**
4392 Broadway
Depew, NY 14043

 **Canada**
2290 Industrial Street
Burlington, Ontario
L7P 1A1

 888.842.5668

 905.335.5523

 info@rpmrubberparts.com

