

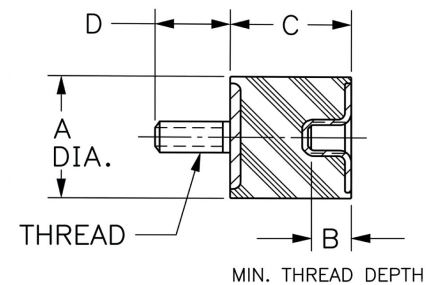
J-4624-545 Sandwich Mounts Unc Thread Type 2



Item # J-4624-545 Sandwich Mounts Unc Thread Type 2
 Manufacturer: LORD Corporation

Specifications

A (in)	1
B (in)	1/4
C (in)	0.75
Compression Spring Rate Kc (Imperial)	2100
Compression Spring Rate Kc (Metric)	368
Compression Static Load (lbs)	135
Compression Static Load (Metric)	601
D (in)	0.5
Durometer	65
Elastomer	Oil Resistant Elastomer - Neoprene
Grade per SAE J429	1
Manufacturer	Parker LORD
Shear Spring Rate Ks (lbs/in)	32



Flex-Bolt® Sandwich Mounts are Manufactured by LORD Corporation.



[Request for Quote](#)

[Contact Us](#)

USA
 4392 Broadway
 Depew, NY 14043

Canada
 2290 Industrial Street
 Burlington, Ontario
 L7P 1A1

888.842.5668
 905.335.5523
info@rpmrubberparts.com



J-4624-545 Sandwich Mounts Unc Thread Type 2

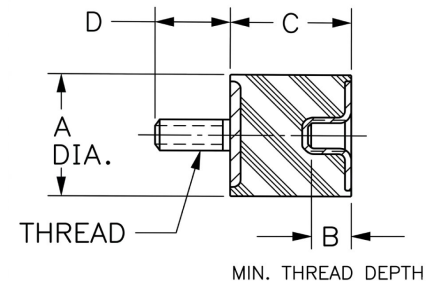


Item # J-4624-545 Sandwich Mounts Unc Thread Type 2

Manufacturer: LORD Corporation

Specifications (Continued)

Shear Spring Rate Ks (Metric)	53
Shear Static Load (lbs)	22
Shear Static Load (Metric)	98
Thread Size	5/16-18 UNC
Thread Type	Standard UNC
Types	2



Flex-Bolt® Sandwich Mounts are Manufactured by LORD Corporation.



[Request for Quote](#)

[Contact Us](#)

USA
4392 Broadway
Depew, NY 14043

Canada
2290 Industrial Street
Burlington, Ontario
L7P 1A1

888.842.5668

905.335.5523

info@rpmrubberparts.com

