

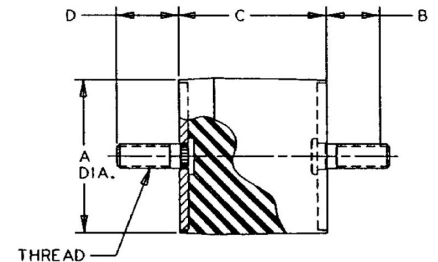
# J-5425-15 Sandwich Mounts Unc Thread Type 1



Item # J-5425-15 Sandwich Mounts Unc Thread Type 1  
 Manufacturer: LORD Corporation

## Specifications

A (in)	3.12
B (in)	1.25
C (in)	3
Compression Spring Rate Kc (Imperial)	1250
Compression Spring Rate Kc (Metric)	219
Compression Static Load (lbs)	600
Compression Static Load (Metric)	2669
D (in)	1.25
Durometer	39
Elastomer	Natural Rubber
Grade per SAE J429	2
Manufacturer	Parker LORD
Shear Spring Rate Ks (lbs/in)	220



Flex-Bolt® Sandwich Mounts are Manufactured by LORD Corporation.



[Request for Quote](#)

[Contact Us](#)

**USA**  
 4392 Broadway  
 Depew, NY 14043

**Canada**  
 2290 Industrial Street  
 Burlington, Ontario  
 L7P 1A1

888.842.5668

905.335.5523

[info@rpmrubberparts.com](mailto:info@rpmrubberparts.com)



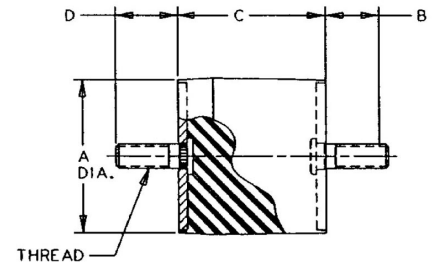
# J-5425-15 Sandwich Mounts Unc Thread Type 1



Item # J-5425-15 Sandwich Mounts Unc Thread Type 1  
Manufacturer: LORD Corporation

## Specifications (Continued)

Shear Spring Rate Ks (Metric)	39
Shear Static Load (lbs)	92
Shear Static Load (Metric)	409
Thread Size	1/2-13 UNC
Types	1




Flex-Bolt® Sandwich Mounts are Manufactured by LORD Corporation.



[Request for Quote](#)


[Contact Us](#)

 **USA**  
4392 Broadway  
Depew, NY 14043

 **Canada**  
2290 Industrial Street  
Burlington, Ontario  
L7P 1A1

 888.842.5668

 905.335.5523

 [info@rpmrubberparts.com](mailto:info@rpmrubberparts.com)

