

J-5425-27 Sandwich Mounts Unc Thread Type 2

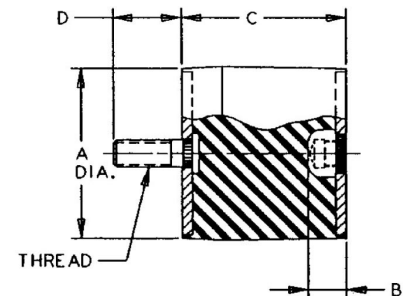


Item # J-5425-27 Sandwich Mounts Unc Thread Type 2

Manufacturer: LORD Corporation

Specifications

A (in)	3.12
B (in)	0.53
C (in)	3
Compression Spring Rate Kc (Imperial)	2750
Compression Spring Rate Kc (Metric)	482
Compression Static Load (lbs)	1540
Compression Static Load (Metric)	6850
D (in)	1.25
Durometer	58
Elastomer	Natural Rubber
Grade per SAE J429	2
Manufacturer	Parker LORD
Shear Spring Rate Ks (lbs/in)	650



Flex-Bolt® Sandwich Mounts are Manufactured by LORD Corporation.



[Request for Quote](#)

[Contact Us](#)

USA
4392 Broadway
Depew, NY 14043

Canada
2290 Industrial Street
Burlington, Ontario
L7P 1A1

888.842.5668

905.335.5523

info@rpmrubberparts.com



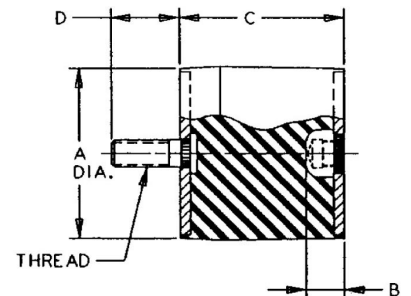
J-5425-27 Sandwich Mounts Unc Thread Type 2



Item # J-5425-27 Sandwich Mounts Unc Thread Type 2
Manufacturer: LORD Corporation

Specifications (Continued)

Shear Spring Rate Ks (Metric)	114
Shear Static Load (lbs)	236
Shear Static Load (Metric)	1050
Thread Size	1/2-20 UNC
Types	2




Flex-Bolt® Sandwich Mounts
are Manufactured by LORD
Corporation.



[Request for Quote](#)

[Contact Us](#)

 **USA**
4392 Broadway
Depew, NY 14043

 **Canada**
2290 Industrial Street
Burlington, Ontario
L7P 1A1

 888.842.5668

 905.335.5523

 info@rpmrubberparts.com

