

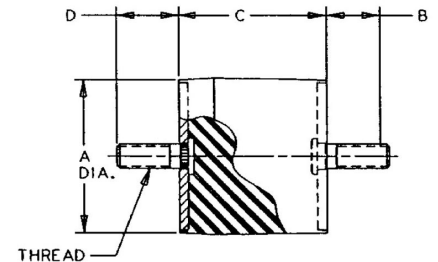
J-5425-276 Sandwich Mounts Unc Thread Type 1



Item # J-5425-276 Sandwich Mounts Unc Thread Type 1
 Manufacturer: LORD Corporation

Specifications

A (in)	3.12
B (in)	1.25
C (in)	2.25
Compression Spring Rate Kc (Imperial)	3525
Compression Spring Rate Kc (Metric)	617
Compression Static Load (lbs)	1670
Compression Static Load (Metric)	7428
D (in)	1.25
Durometer	58
Elastomer	Natural Rubber
Grade per SAE J429	2
Manufacturer	Parker LORD
Shear Spring Rate Ks (lbs/in)	850



Flex-Bolt® Sandwich Mounts are Manufactured by LORD Corporation.



[Request for Quote](#)

[Contact Us](#)

USA
 4392 Broadway
 Depew, NY 14043

Canada
 2290 Industrial Street
 Burlington, Ontario
 L7P 1A1

☎ 888.842.5668
 ☎ 905.335.5523
 ✉ info@rpmrubberparts.com



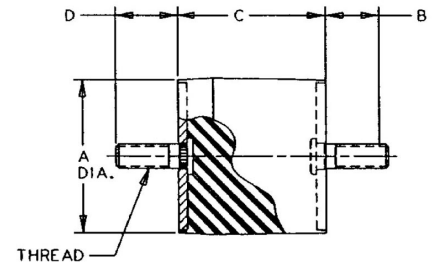
J-5425-276 Sandwich Mounts Unc Thread Type 1



Item # J-5425-276 Sandwich Mounts Unc Thread Type 1
Manufacturer: LORD Corporation

Specifications (Continued)

Shear Spring Rate Ks (Metric)	149
Shear Static Load (lbs)	221
Shear Static Load (Metric)	933
Thread Size	1/2-13 UNC
Types	1



Flex-Bolt® Sandwich Mounts
are Manufactured by LORD
Corporation.



[Request for Quote](#)

[Contact Us](#)

USA
4392 Broadway
Depew, NY 14043

Canada
2290 Industrial Street
Burlington, Ontario
L7P 1A1

888.842.5668

905.335.5523

info@rpmrubberparts.com

