

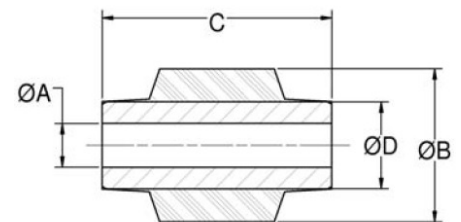
J-6145 Center Bonded Bushings

Item # J-6145 Center Bonded Bushings



Specifications

A (in)	2.008
B (in)	4.19
C (in)	6
D (in)	3.25
Depth (in)	4
Item Name	Bushings without Outer Member
Length (in)	4
Length (mm)	101.6
Max Radial Static Load Rating (lbs)	8200
Max Radial Static Load Rating (kg)	36475
Radial Static Spring Rate (lbs/in)	312000
Radial Static Spring Rate (Metric)	54631
Spring Rate (Torsional) (lb/in)	796



Center Bonded Bushings and Square Bonded Bushings are used in applications where the absorption shock, attenuation of noise, reduction of wear and elimination of lubrication is required.

Center Bonded Bushings are designed to be loaded radially and utilize a soft torsional spring rate to provide freedom in rotation. High radial restraint maintains the alignment between joined parts. They are not intended for use where extreme rotational motion will


[Request for Quote](#)
[Contact Us](#)

USA
4392 Broadway
Depew, NY 14043

Canada
2290 Industrial Street
Burlington, Ontario
L7P 1A1

888.842.5668

905.335.5523

info@rpmrubberparts.com



heavy equipment. These bushings combine a torsional spring with an elastomeric pivot and isolator. They provide positive torsional positioning and pivot action under the most demanding operating conditions. Typical applications include wheel suspensions, vibratory feeders, mobile power equipment and vibratory cable layers.

Easy to install, the uncomplicated designs of the Center Bonded and Square Bonded Bushings provide initial economy, while the rugged elastomers and high strength bonding assure extended service life.



[Request for Quote](#)

[Contact Us](#)



USA

4392 Broadway
Depew, NY 14043



Canada

2290 Industrial Street
Burlington, Ontario
L7P 1A1



888.842.5668



905.335.5523



info@rpmrubberparts.com



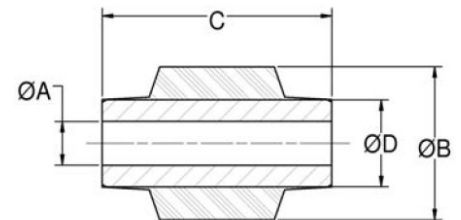
J-6145 Center Bonded Bushings

Item # J-6145 Center Bonded Bushings



Specifications (Continued)

Spring Rate (Torsional) (lb/in) (Metric)	139.4
--	-------



Center Bonded Bushings and Square Bonded Bushings are used in applications where the absorption shock, attenuation of noise, reduction of wear and elimination of lubrication is required.

Center Bonded Bushings are designed to be loaded radially and utilize a soft torsional spring rate to provide freedom in rotation. High radial restraint maintains the alignment between joined parts. They are not intended for use where extreme rotational motion will



[Request for Quote](#)

[Contact Us](#)

USA
4392 Broadway
Depew, NY 14043

Canada
2290 Industrial Street
Burlington, Ontario
L7P 1A1

888.842.5668

905.335.5523

info@rpmrubberparts.com



heavy equipment. These bushings combine a torsional spring with an elastomeric pivot and isolator. They provide positive torsional positioning and pivot action under the most demanding operating conditions. Typical applications include wheel suspensions, vibratory feeders, mobile power equipment and vibratory cable layers.

Easy to install, the uncomplicated designs of the Center Bonded and Square Bonded Bushings provide initial economy, while the rugged elastomers and high strength bonding assure extended service life.



[Request for Quote](#)

[Contact Us](#)



USA

4392 Broadway
Depew, NY 14043



Canada

2290 Industrial Street
Burlington, Ontario
L7P 1A1



888.842.5668



905.335.5523



info@rpmrubberparts.com

