

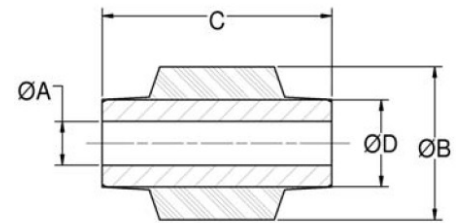
# J-6310-1 Center Bonded Bushings



Item # J-6310-1 Center Bonded Bushings

## Specifications

A (in)	1.004
B (in)	1.84
C (in)	1.69
D (in)	1.25
Depth (in)	1.72
Item Name	<b>Bushings without Outer Member</b>
Length (in)	1.56
Length (mm)	39.62
Max Radial Static Load Rating (lbs)	925
Max Radial Static Load Rating (kg)	4115
Radial Static Spring Rate (lbs/in)	27500
Radial Static Spring Rate (Metric)	4815
Spring Rate (Torsional) (lb/in)	25



Center Bonded Bushings and Square Bonded Bushings are used in applications where the absorption shock, attenuation of noise, reduction of wear and elimination of lubrication is required.

Center Bonded Bushings are designed to be loaded radially and utilize a soft torsional spring rate to provide freedom in rotation. High radial restraint maintains the alignment between joined parts. They are not intended for use where extreme rotational motion will


[Request for Quote](#)
[Contact Us](#)

**USA**  
4392 Broadway  
Depew, NY 14043

**Canada**  
2290 Industrial Street  
Burlington, Ontario  
L7P 1A1

☎ 888.842.5668

☎ 905.335.5523

✉ info@rpmrubberparts.com



heavy equipment. These bushings combine a torsional spring with an elastomeric pivot and isolator. They provide positive torsional positioning and pivot action under the most demanding operating conditions. Typical applications include wheel suspensions, vibratory feeders, mobile power equipment and vibratory cable layers.

Easy to install, the uncomplicated designs of the Center Bonded and Square Bonded Bushings provide initial economy, while the rugged elastomers and high strength bonding assure extended service life.



[Request for Quote](#)

[Contact Us](#)



**USA**

4392 Broadway  
Depew, NY 14043



**Canada**

2290 Industrial Street  
Burlington, Ontario  
L7P 1A1



888.842.5668



905.335.5523



[info@rpmrubberparts.com](mailto:info@rpmrubberparts.com)



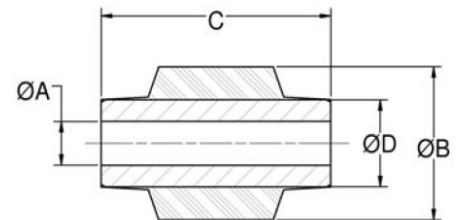
# J-6310-1 Center Bonded Bushings



Item # J-6310-1 Center Bonded Bushings

## Specifications (Continued)

Spring Rate (Torsional) (lb/in) (Metric)	4.4
--	-----



Center Bonded Bushings and Square Bonded Bushings are used in applications where the absorption shock, attenuation of noise, reduction of wear and elimination of lubrication is required.

Center Bonded Bushings are designed to be loaded radially and utilize a soft torsional spring rate to provide freedom in rotation. High radial restraint maintains the alignment between joined parts. They are not intended for use where extreme rotational motion will



[Request for Quote](#)

[Contact Us](#)

**USA**  
4392 Broadway  
Depew, NY 14043

**Canada**  
2290 Industrial Street  
Burlington, Ontario  
L7P 1A1

888.842.5668

905.335.5523

[info@rpmrubberparts.com](mailto:info@rpmrubberparts.com)




heavy equipment. These bushings combine a torsional spring with an elastomeric pivot and isolator. They provide positive torsional positioning and pivot action under the most demanding operating conditions. Typical applications include wheel suspensions, vibratory feeders, mobile power equipment and vibratory cable layers.

Easy to install, the uncomplicated designs of the Center Bonded and Square Bonded Bushings provide initial economy, while the rugged elastomers and high strength bonding assure extended service life.



[Request for Quote](#)


[Contact Us](#)

 **USA**  
4392 Broadway  
Depew, NY 14043

 **Canada**  
2290 Industrial Street  
Burlington, Ontario  
L7P 1A1

 888.842.5668

 905.335.5523

 [info@rpmrubberparts.com](mailto:info@rpmrubberparts.com)

