

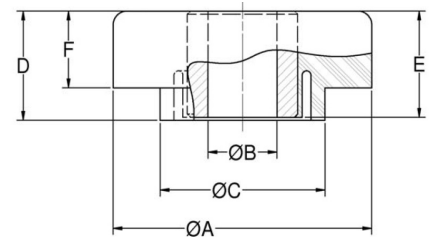
J-8006-10 Two-Piece Mounts Cbb Cbc Series



Item # J-8006-10 Two-Piece Mounts Cbb Cbc Series
 Manufacturer: Lord Corporation

Specifications

A (in)	2.5
Applicable Steel Washer	J-2049-68
B (in)	0.64
C (in)	1.63
D (in)	0.81
E (in)	0.56
F (in)	0.62
F (mm)	15.7
Figure	3 & 4
G (in)	0.47
G (mm)	11.9
ID (in)	0.66
ID (mm)	16.8



Two-Piece Mounts are designed for applications involving severe dynamic forces in the static load direction, as well as the rebound direction. Travel is limited in both directions by rubber in compression which provides snubbing. These mounts are designed to support engines, cabs and accessory units, accommodate frame racking and twisting while isolating vibration and absorbing shock.



[Request for Quote](#)

[Contact Us](#)

USA
 4392 Broadway
 Depew, NY 14043

Canada
 2290 Industrial Street
 Burlington, Ontario
 L7P 1A1

☎ 888.842.5668

☎ 905.335.5523

✉ info@rpmrubberparts.com



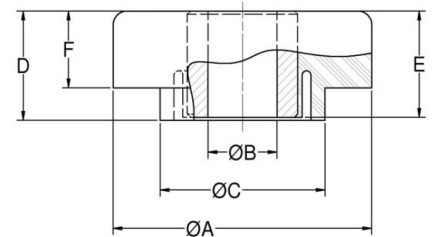
J-8006-10 Two-Piece Mounts Cbb Cbc Series



Item # J-8006-10 Two-Piece Mounts Cbb Cbc Series
 Manufacturer: Lord Corporation

Specifications (Continued)

Manufacturer	Parker LORD
Material	Low Carbon Steel
Max Axial Static Load at Deflection (lbs)	440 at 0.04
Max Axial Static Load Rating at Deflection (lbs/in)	440 at 0.04
Max Axial Static Load Rating at Deflection (N/mm)	1960 at 0.95
Recommended Bolt Grade or Class (SAE J1199)	10.9
Recommended Bolt Grade or Class (SAE J429)	8
Recommended Bolt Size (in)	5/8
SD (in)	1.65
SD (mm)	41.9
T (in)	0.18
T (mm)	4.6
WD (in)	2.88



Two-Piece Mounts are designed for applications involving severe dynamic forces in the static load direction, as well as the rebound direction. Travel is limited in both directions by rubber in compression which provides snubbing. These mounts are designed to support engines, cabs and accessory units, accommodate frame racking and twisting while isolating vibration and absorbing shock.



[Request for Quote](#)

[Contact Us](#)

USA
 4392 Broadway
 Depew, NY 14043

Canada
 2290 Industrial Street
 Burlington, Ontario
 L7P 1A1

☎ 888.842.5668

☎ 905.335.5523

✉ info@rpmrubberparts.com



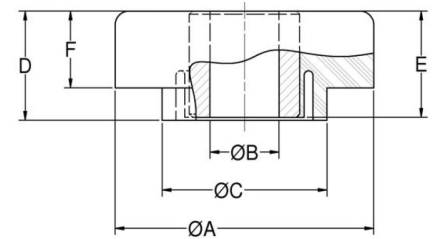
J-8006-10 Two-Piece Mounts Cbb Cbc Series



Item # J-8006-10 Two-Piece Mounts Cbb Cbc Series
 Manufacturer: Lord Corporation

Specifications (Continued)

WD (mm)	73.2
WT (in)	0.125
WT (mm)	3.2



Two-Piece Mounts are designed for applications involving severe dynamic forces in the static load direction, as well as the rebound direction. Travel is limited in both directions by rubber in compression which provides snubbing. These mounts are designed to support engines, cabs and accessory units, accommodate frame racking and twisting while isolating vibration and absorbing shock.



[Request for Quote](#)

[Contact Us](#)

USA
 4392 Broadway
 Depew, NY 14043

Canada
 2290 Industrial Street
 Burlington, Ontario
 L7P 1A1

☎ 888.842.5668

☎ 905.335.5523

✉ info@rpmrubberparts.com

