

SMA090-0900-1 Large Shear Mounts

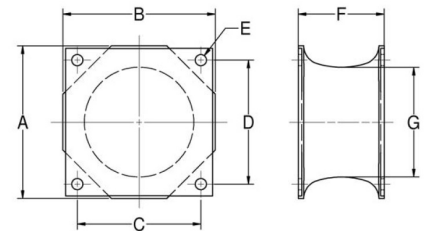


Item # SMA090-0900-1 Large Shear Mounts

Manufacturer: Lord Corporation

Specifications

| | |
|---------------------------------------|----------------|
| A (in) | 9 |
| B (in) | 9 |
| C (in) | 7.5 |
| Compression Spring Rate Kc (Imperial) | 10500 |
| Compression Spring Rate Kc (Metric) | 1839 |
| Compression Static Load (lbs) | 7600 |
| Compression Static Load (Metric) | 33806 |
| D (in) | 7.5 |
| E (in) | 0.51 |
| Elastomer | Natural Rubber |
| F (in) | 4 |
| F (mm) | 101.6 |
| Flange Thickness (in) | 0.19 |



Request for Quote

Contact Us

USA
4392 Broadway
Depew, NY 14043

Canada
2290 Industrial Street
Burlington, Ontario
L7P 1A1

888.842.5668

905.335.5523

info@rpmrubberparts.com



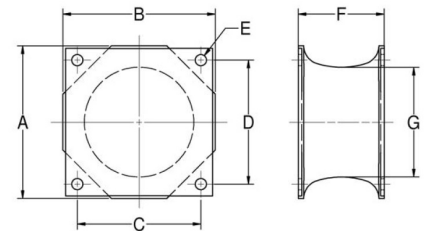
SMA090-0900-1 Large Shear Mounts



Item # SMA090-0900-1 Large Shear Mounts
Manufacturer: Lord Corporation

Specifications (Continued)

| | |
|--------------------------------------|--------------------|
| Flange Thickness (mm) | 4.8 |
| G (in) | 6.5 |
| G (mm) | 165.1 |
| Grade per SAE J429 | 2 |
| Manufacturer | Parker LORD |
| Shear Spring Rate Ks (lbs/in) | 1675 |
| Shear Spring Rate Ks (Metric) | 293 |
| Shear Static Load (lbs) | 900 |
| Shear Static Load (Metric) | 203 |
| Types | 5L |



[Request for Quote](#)

[Contact Us](#)

USA
 4392 Broadway
 Depew, NY 14043

Canada
 2290 Industrial Street
 Burlington, Ontario
 L7P 1A1

888.842.5668
 905.335.5523
info@rpmrubberparts.com

