

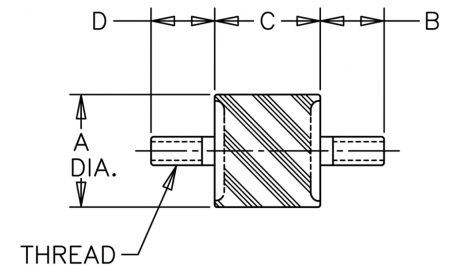
# VMA-1035KU Sandwich Mounts Unc Thread Type 1



**Item #** VMA-1035KU Sandwich Mounts Unc Thread Type 1  
**Manufacturer:** RPM Mechanical Inc

## Specifications

A (in)	4
B (in)	1.77
C (in)	1.38
Compression Spring Rate Kc (Imperial)	23545
Compression Spring Rate Kc (Metric)	4167
Compression Static Load (lbs)	3793
Compression Static Load (Metric)	16876
D (in)	1.77
Durometer	68
Elastomer	Natural Rubber
Grade per SAE J429	1
Manufacturer	RPM Mechanical Inc.
Shear Spring Rate Ks (lbs/in)	2811


[Request for Quote](#)
[Contact Us](#)

**USA**  
 4392 Broadway  
 Depew, NY 14043

**Canada**  
 2290 Industrial Street  
 Burlington, Ontario  
 L7P 1A1

888.842.5668

905.335.5523

[info@rpmrubberparts.com](mailto:info@rpmrubberparts.com)



# VMA-1035KU Sandwich Mounts Unc Thread Type 1



Item # VMA-1035KU Sandwich Mounts Unc Thread Type 1  
Manufacturer: RPM Mechanical Inc

## Specifications (Continued)

Shear Spring Rate Ks (Metric)	499
Shear Static Load (lbs)	1264
Shear Static Load (Metric)	5625
Thread Size	5/8-11 UNC
Thread Type	Standard UNC
Types	1



[Request for Quote](#)

[Contact Us](#)

 **USA**  
4392 Broadway  
Depew, NY 14043

 **Canada**  
2290 Industrial Street  
Burlington, Ontario  
L7P 1A1

 888.842.5668

 905.335.5523

 [info@rpmrubberparts.com](mailto:info@rpmrubberparts.com)

