

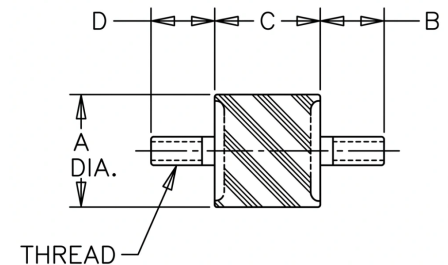
# VMA-1613G6U Sandwich Mounts Unc Thread Type 1



**Item #** VMA-1613G6U Sandwich Mounts Unc Thread Type 1  
**Manufacturer:** RPM Mechanical Inc

## Specifications

A (in)	0.62
B (in)	1/2
C (in)	0.5
Compression Spring Rate Kc (Imperial)	358
Compression Spring Rate Kc (Metric)	63
Compression Static Load (lbs)	18
Compression Static Load (Metric)	82
D (in)	0.5
Durometer	43
Elastomer	Natural Rubber
Grade per SAE J429	1
Manufacturer	RPM Mechanical Inc.
Shear Spring Rate Ks (lbs/in)	70


[Request for Quote](#)
[Contact Us](#)

**USA**  
 4392 Broadway  
 Depew, NY 14043

**Canada**  
 2290 Industrial Street  
 Burlington, Ontario  
 L7P 1A1

888.842.5668

905.335.5523

[info@rpmrubberparts.com](mailto:info@rpmrubberparts.com)



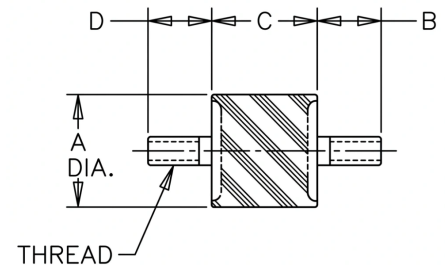
# VMA-1613G6U Sandwich Mounts Unc Thread Type 1



Item # VMA-1613G6U Sandwich Mounts Unc Thread Type 1  
Manufacturer: RPM Mechanical Inc

## Specifications (Continued)


Shear Spring Rate Ks (Metric)	13
Shear Static Load (lbs)	6.2
Shear Static Load (Metric)	27
Thread Size	1/4-20 UNC
Thread Type	Standard UNC
Types	1



[Request for Quote](#)


[Contact Us](#)

 **USA**  
4392 Broadway  
Depew, NY 14043

 **Canada**  
2290 Industrial Street  
Burlington, Ontario  
L7P 1A1

 888.842.5668

 905.335.5523

 [info@rpmrubberparts.com](mailto:info@rpmrubberparts.com)

