

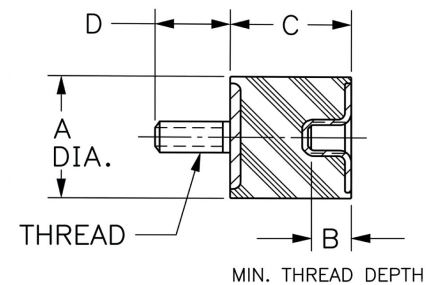
# VMB-1060BU Sandwich Mounts Unc Thread Type 2



**Item #** VMB-1060BU Sandwich Mounts Unc Thread Type 2  
**Manufacturer:** RPM Mechanical Inc

## Specifications

A (in)	4
B (in)	0.62
C (in)	2.36
Compression Spring Rate Kc (Imperial)	166
Compression Spring Rate Kc (Metric)	936
Compression Static Load (lbs)	1509
Compression Static Load (Metric)	6712
D (in)	1.77
Durometer	57
Elastomer	Natural Rubber
Grade per SAE J429	1
Manufacturer	RPM Mechanical Inc.
Shear Spring Rate Ks (lbs/in)	31



[Request for Quote](#)

[Contact Us](#)

**USA**  
 4392 Broadway  
 Depew, NY 14043

**Canada**  
 2290 Industrial Street  
 Burlington, Ontario  
 L7P 1A1

888.842.5668  
 905.335.5523  
[info@rpmrubberparts.com](mailto:info@rpmrubberparts.com)



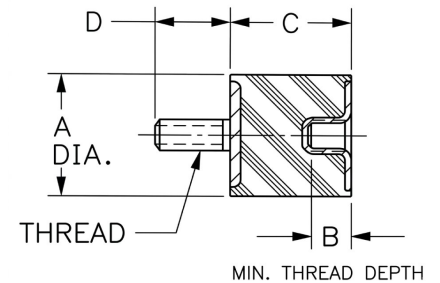
# VMB-1060BU Sandwich Mounts Unc Thread Type 2



**Item #** VMB-1060BU Sandwich Mounts Unc Thread Type 2  
**Manufacturer:** RPM Mechanical Inc

## Specifications (Continued)

Shear Spring Rate Ks (Metric)	174
Shear Static Load (lbs)	503
Shear Static Load (Metric)	2237
Thread Size	5/8-11 UNC
Thread Type	Standard UNC
Types	2



[Request for Quote](#)

[Contact Us](#)

**USA**  
 4392 Broadway  
 Depew, NY 14043

**Canada**  
 2290 Industrial Street  
 Burlington, Ontario  
 L7P 1A1

888.842.5668

905.335.5523

[info@rpmrubberparts.com](mailto:info@rpmrubberparts.com)

