

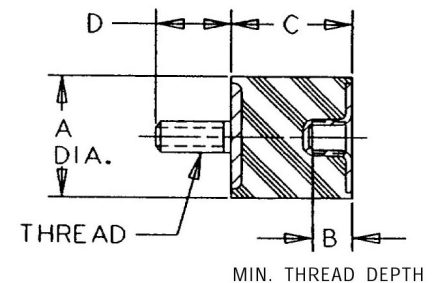
# VMB-3825H10U Sandwich Mounts Unc Thread Type 2



**Item #** VMB-3825H10U Sandwich Mounts Unc Thread Type 2  
**Manufacturer:** RPM Mechanical Inc

## Specifications

A (in)	1.5
B (in)	0.38
C (in)	1
Compression Spring Rate Kc (Imperial)	33
Compression Spring Rate Kc (Metric)	189
Compression Static Load (lbs)	117
Compression Static Load (Metric)	520
D (in)	1
Durometer	43
Elastomer	Natural Rubber
Grade per SAE J429	1
Manufacturer	RPM Mechanical Inc.
Shear Spring Rate Ks (lbs/in)	6



[Request for Quote](#)

[Contact Us](#)

**USA**  
 4392 Broadway  
 Depew, NY 14043

**Canada**  
 2290 Industrial Street  
 Burlington, Ontario  
 L7P 1A1

888.842.5668  
 905.335.5523  
[info@rpmrubberparts.com](mailto:info@rpmrubberparts.com)



# VMB-3825H10U Sandwich Mounts Unc Thread Type 2

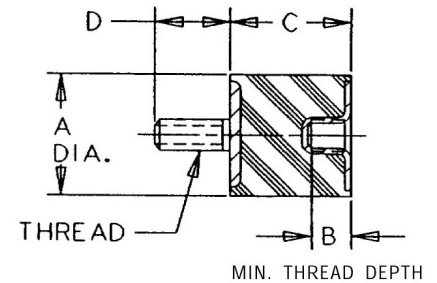


Item # VMB-3825H10U Sandwich Mounts Unc Thread Type 2

Manufacturer: RPM Mechanical Inc

## Specifications (Continued)

Shear Spring Rate Ks (Metric)	35
Shear Static Load (lbs)	39
Shear Static Load (Metric)	173
Thread Size	3/8-16 UNC
Thread Type	Standard UNC
Types	2



[Request for Quote](#)

[Contact Us](#)

**USA**  
4392 Broadway  
Depew, NY 14043

**Canada**  
2290 Industrial Street  
Burlington, Ontario  
L7P 1A1

888.842.5668

905.335.5523

[info@rpmrubberparts.com](mailto:info@rpmrubberparts.com)

