

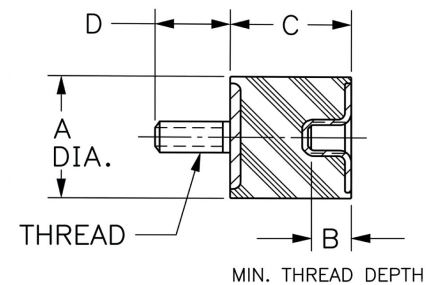
VMB-4035B10U Sandwich Mounts Unc Thread Type 2



Item # VMB-4035B10U Sandwich Mounts Unc Thread Type 2
Manufacturer: RPM Mechanical Inc

Specifications

| | |
|--|----------------------------|
| A (in) | 1.57 |
| B (in) | 0.38 |
| C (in) | 1.38 |
| Compression Spring Rate Kc (Imperial) | 36 |
| Compression Spring Rate Kc (Metric) | 206 |
| Compression Static Load (lbs) | 198 |
| Compression Static Load (Metric) | 881 |
| D (in) | 1 |
| Durometer | 57 |
| Elastomer | Natural Rubber |
| Grade per SAE J429 | 1 |
| Manufacturer | RPM Mechanical Inc. |
| Shear Spring Rate Ks (lbs/in) | 8 |



[Request for Quote](#)

[Contact Us](#)

USA
 4392 Broadway
 Depew, NY 14043

Canada
 2290 Industrial Street
 Burlington, Ontario
 L7P 1A1

☎ 888.842.5668
 ☎ 905.335.5523
 ✉ info@rpmrubberparts.com



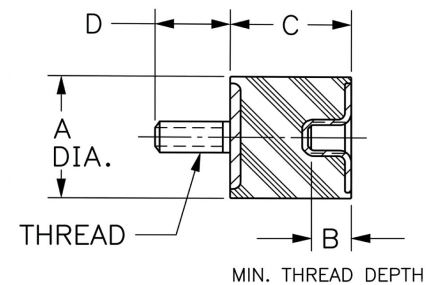
VMB-4035B10U Sandwich Mounts Unc Thread Type 2



Item # VMB-4035B10U Sandwich Mounts Unc Thread Type 2
Manufacturer: RPM Mechanical Inc

Specifications (Continued)

| | |
|-------------------------------|--------------|
| Shear Spring Rate Ks (Metric) | 47 |
| Shear Static Load (lbs) | 66 |
| Shear Static Load (Metric) | 15 |
| Thread Size | 3/8-16 UNC |
| Thread Type | Standard UNC |
| Types | 2 |



[Request for Quote](#)

[Contact Us](#)

USA
 4392 Broadway
 Depew, NY 14043

Canada
 2290 Industrial Street
 Burlington, Ontario
 L7P 1A1

☎ 888.842.5668
 ☎ 905.335.5523
 ✉ info@rpmrubberparts.com

