

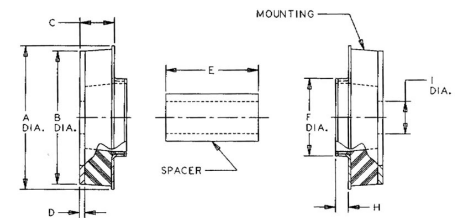
Y-30100-7-1 Two-Piece Mounts Ssb Series



Item # Y-30100-7-1 Two-Piece Mounts Ssb Series
 Manufacturer: Lord Corporation

Specifications

A (in)	2.222.62
Axial Static Spring Rate (lbs/in)	1100017900 4970 8120
Axial Static Spring Rate (Metric)	14301930 3215 890
B (in)	2
C (in)	0.81
D (in)	0.125
E (in)	1.81
F (in)	1.38
I (in)	0.51
I (mm)	12.9
K (in)	2.06
K (mm)	52.3
Manufacturer	Parker LORD



Two-Piece Mounts are designed for applications involving severe dynamic forces in the static load direction, as well as the rebound direction. Travel is limited in both directions by rubber in compression which provides snubbing. These mounts are designed to support engines, cabs and accessory units, accommodate frame racking and twisting while isolating vibration and absorbing shock. Typical applications for Two-Piece Mounts include on-highway, off-highway vehicles.


[Request for Quote](#)
[Contact Us](#)

USA
 4392 Broadway
 Depew, NY 14043

Canada
 2290 Industrial Street
 Burlington, Ontario
 L7P 1A1

888.842.5668

905.335.5523

info@rpmrubberparts.com



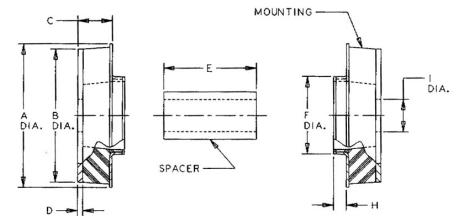
Y-30100-7-1 Two-Piece Mounts Ssb Series



Item # Y-30100-7-1 Two-Piece Mounts Ssb Series
 Manufacturer: Lord Corporation

Specifications (Continued)

Material	Low Carbon Steel
Max Axial Static Load at Deflection (lbs)	185 at 0.035 300 at 0.04 400 at 0.035 685 at 0.04
Max Axial Static Load Rating at Deflection (lbs/in)	185 at 0.035 300 at 0.04 400 at 0.035 685 at 0.04
Radial Static Spring Rate (lbs/in)	1370 2230 560 910
Radial Static Spring Rate (Metric)	1370 2230 560 910
Recommended Bolt Grade or Class (SAE J1199)	5.8
Recommended Bolt Grade or Class (SAE J429)	2
Recommended Bolt Size (in)	0.5
SD (in)	1.4
SD (mm)	35.6
T (in)	0.625
T (mm)	15.9



Two-Piece Mounts are designed for applications involving severe dynamic forces in the static load direction, as well as the rebound direction. Travel is limited in both directions by rubber in compression which provides snubbing. These mounts are designed to support engines, cabs and accessory units, accommodate frame racking and twisting while isolating vibration and absorbing shock. Typical applications for Two-Piece Mounts include on-highway, off-highway vehicles.



[Request for Quote](#)

[Contact Us](#)

USA
 4392 Broadway
 Depew, NY 14043

Canada
 2290 Industrial Street
 Burlington, Ontario
 L7P 1A1

888.842.5668
 905.335.5523
info@rpmrubberparts.com

