

CENTER BONDED MOUNTS

FEATURING:

CB-1110 SERIES

CB-1180 SERIES

CB SERIES

CB-50 SERIES

STA SERIES

SAFETIED TUBEFORM
SERIES

Center Bonded Mounts

Center Bonded Mounts isolate vibration, control shock and reduce noise due to structure borne vibrations. Available in a full range of rated load capacities and able to withstand shock loads of 10 g's, these mounts effectively protect equipment and improve operator comfort. They are ideal for automotive, marine, railroad and industrial markets.

Center Bonded Mounts provide flexible suspension systems for mobile, transport-mounted or portable equipment. Typical applications include engines, cabs, fuel tanks, pumps, air conditioning units, compressors and industrial machinery.

Features and Benefits:

- Vibration isolation in all directions
- Noise attenuation
- Easy installation because of one-piece design
- Low-cost installation
- Long service life
- Consistent performance because of permanently bonded design
- Shock protection in all directions provided by cushioned snubbing, no metal-to-metal bottoming
- Standard sizes available from stock
- Space-saving size
- Captive installation after overload failure when recommended bolt, washer and nut are used
- Accommodate English and Metric bolts

Application Engineering Assistance:

Frequently, vibration isolation problems require a system engineering analysis. Lord has the computer capability, as well as specialized programs, for analyzing engine/ transmission combinations. The output from this analysis is a mounting proposal which optimizes performance over the complete range of operating speeds. This service is available to you upon request.



FEATURING:

CB-1110 SERIES

CB-1180 SERIES

CB SERIES

CB-50 SERIES

STA SERIES

**SAFETIED TUBEFORM
SERIES**

CB-1100 Series

Specifications and Dimensions: Table 1

Part Number	Color Code	Maximum Axial Static Load Rating ①				Part Dimensions											
		Load		Deflection		A ± .03		B ± .01		C ± .015		D		E ± .015		F ± .02	
		lbs	N	in	mm	in	mm	in	mm	in	mm	in	mm	in	mm	in	mm
CB-1120-1 CB-1120-3	Blue —	75 125	330 560	.025 .025	.64 .64	1.09 1.09	27.7 27.7	.40 .40	10.2 10.2	.81 .81	20.6 20.6	1.02 1.02	25.9 25.9	.62 .62	15.7 15.7	.22 .22	5.6 5.6
CB-1121-2 CB-1121-4	Yellow —	250 450	1110 2000	.04 .04	1.02 1.02	1.75 1.75	44.5 44.5	.515 .515	13.1 13.1	1.24 1.24	31.5 31.5	1.25 1.25	31.8 31.8	1.00 1.00	25.4 25.4	.41 .41	10.4 10.4
CB-1122-2 CB-1122-4	Yellow —	350 600	1560 2670	.06 .06	1.52 1.52	2.00 2.00	50.8 50.8	.532 .532	13.5 13.5	1.35 1.35	34.3 34.3	1.62 1.62	41.1 41.1	1.31 1.31	33.3 33.3	.53 .53	13.5 13.5
CB-1123-2 CB-1123-5	Yellow —	500 1000	2230 4450	.07 .06	1.78 1.52	2.50 2.50	63.5 63.5	.648 .648	16.5 16.5	1.62 1.62	41.2 41.2	2.00 2.00	50.8 50.8	1.69 1.69	42.9 42.9	.62 .62	15.7 15.7
CB-1124-2 CB-1124-5 CB-1124-13	Yellow Orange —	750 1400 1250	3340 6230 5560	.085 .07 .085	2.16 1.78 2.16	2.98 2.98 2.98	75.7 75.7 75.7	.648 .648 .648	16.5 16.5 16.5	1.98 1.98 1.98	50.3 50.3 50.3	2.22 2.22 2.00	56.4 56.4 50.8	2.00 2.00 1.82	50.8 50.8 46.2	.81 .81 .81	20.6 20.6 20.6
CB-1125-2 CB-1125-4	Yellow —	1400 2100	6230 9350	.13 .12	3.30 3.05	3.74 3.74	95.0 95.0	.803 .803	20.4 20.4	2.23 2.23	56.6 56.6	2.48 2.48	63.0 63.0	2.00 2.00	50.8 50.8	1.00 1.00	25.4 25.4

Mounts and washers only supplied by Lord. For installation instructions, see P. 62.

① These ratings are for general industrial applications. For on-highway use 80% of loads shown. For off-highway use 70% of loads shown.

In applications where the mounts will be immersed in oil, parts made in oil-resistant elastomer are available. Contact Lord Corporation for additional information.

CB-1100 Series

Specifications and Dimensions: Table 2

Part Number	Required Mating Directions												Recommended Bolt Information*				Nominal Dynamic — Static Spring Rate Ratio ②
	H ± .03		I _D Min. Dia.		K _D Min. Dia.		S _D ± .03		T ± .03		R ± .015		Size		Grade or Class		
	in	mm	in	mm	in	mm	in	mm	in	mm	in	mm	English	Metric	SAE J429	SAE J1199	
CB-1120-1 CB-1120-3	.21 .21	5.3 5.3	1.25 1.25	31.8 31.8	1.12 1.12	28.5 28.5	.75 .75	19.1 19.1	.31 .31	7.9 7.9	.06 .06	1.5 1.5	3/8 3/8	M10 M10	2 2	5.8 5.8	1.08 1.19
CB-1121-2 CB-1121-4	.38 .38	9.7 9.7	2.00 2.00	50.8 50.8	1.50 1.50	38.1 38.1	1.12 1.12	28.4 28.4	.38 .38	9.7 9.7	.06 .06	1.5 1.5	1/2 1/2	M12 M12	2 2	5.8 5.8	1.15 1.22
CB-1122-2 CB-1122-4	.45 .45	11.4 11.4	2.25 2.25	57.2 57.2	2.00 2.00	50.8 50.8	1.25 1.25	31.8 31.8	.62 .62	15.8 15.8	.06 .06	1.5 1.5	1/2 1/2	M12 M12	2 2	5.8 5.8	1.15 1.22
CB-1123-2 CB-1123-5	.56 .56	14.2 14.2	2.88 2.88	73.2 73.2	2.25 2.25	57.2 57.2	1.50 1.50	38.1 38.1	.75 .75	19.1 19.1	.06 .06	1.5 1.5	5/8 5/8	M16 M16	8 8	10.9 10.9	1.15 1.23
CB-1124-2 CB-1124-5 CB-1124-13	.71 .71 .71	18.0 18.0 18.0	3.50 3.50 3.50	88.9 88.9 88.9	2.50 2.50 2.50	63.5 63.5 63.5	1.81 1.81 1.81	46.0 46.0 46.0	.93 .93 .75	23.6 23.6 19.1	.06 .06 .06	1.5 1.5 1.5	5/8 5/8 5/8	M16 M16 M16	8 8 8	10.9 10.9 10.9	1.15 1.23 1.23
CB-1125-2 CB-1125-4	.94 .94	23.9 23.9	4.25 4.25	108.0 108.0	3.00 3.00	76.2 76.2	2.00 2.00	50.8 50.8	.75 .75	19.1 19.1	.12 .12	3.0 3.0	3/4 3/4	M18 M18	8 8	10.9 10.9	1.15 1.22

For installation instructions, see P. 62.

* For tightening torque information, see Pp.121 and 122.

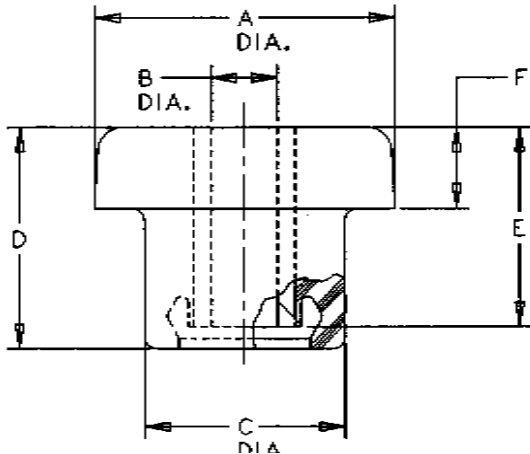
This column of figures can be used to calculate ② dynamic spring rate for natural frequency based on static values.

$$(K_{DYN} = K_{ST} \times \frac{DYN}{STATIC} \text{ Ratio})$$

CB-1100 Series

Part Dimension

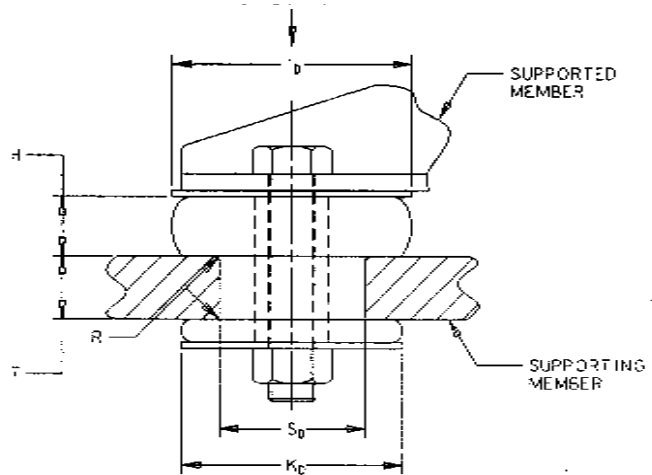
Figure 1



Specifications and Dimensions: Table 2

Installation View

Figure 2



CB-1100 Series

Washer Part Numbers and Dimensions: Table 3

CB-1100 Series	Head Washer	O.D.		I.D.		Thk.		Tail Washer	O.D.		I.D.		Thk.	
		in	mm	in	mm	in	mm		in	mm	in	mm	in	mm
CB-1120	J-2049-62	1.25	31.8	.40	10.2	.125	3.2	J-2049-61	1.12	28.4	.40	10.2	.125	3.2
CB-1121	J-2049-64	2.00	50.8	.52	13.2	.125	3.2	J-2049-63	1.50	38.1	.52	13.2	.125	3.2
CB-1122	J-2049-65	2.25	57.2	.52	13.2	.125	3.2	J-2049-64	2.00	50.8	.52	13.2	.125	3.2
CB-1123	J-2049-68	2.88	73.2	.66	16.8	.125	3.2	J-2049-66	2.25	57.2	.64	16.3	.125	3.2
CB-1124	J-2049-70	3.50	88.9	.64	16.3	.190	4.8	J-2049-67	2.50	63.5	.64	16.3	.125	3.2
CB-1125	J-2049-71	4.25	108.0	.80	20.3	.190	4.8	J-2049-69	3.00	76.2	.80	20.4	.190	4.8

CB-1180 Series

Specifications: Table 1

Part Number	Maximum Axial Static Load Rating ①				Part Dimensions											
	Load		Deflection		A		B		C		D		E		F	
	lbs	N	in	mm	in	mm	in	mm	in	mm	in	mm	in	mm	in	mm
CB-1180-1	400	1780	.135	3.4	2.50	63.1	.64	16.3	1.87	47.8	3.20	81.3	2.12	53.8	1.01	25.7
CB-1180-2	700	3115	.156	3.9	2.50	63.1	.64	16.3	1.87	47.8	3.20	81.3	2.12	53.8	1.01	25.7

① These ratings are for general industrial applications. For on-highway use 80% of loads shown. For off-highway use 70% of loads shown.

For installation instructions, see P. 62.

CB-1180 Series

Specifications: Table 2

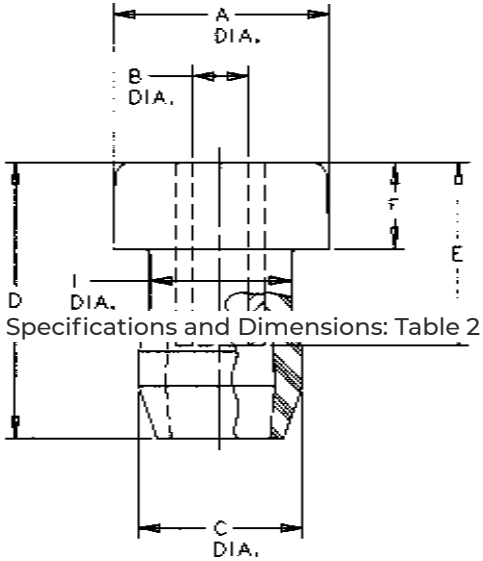
Part Number	Part Dimensions										Recommended Bolt Information*			
	H		I		S _D ± .03		R		T		Size		Grade or Class	
	in	mm	in	mm	in	mm	in	mm	in	mm	English	Metric	SAE J429	SAE J1199
CB-1180-1	.87	22.1	1.625	41.3	1.50	38.1	.075	1.9	.75	19.1	5/8	M16	8	10.9
CB-1180-2	.87	22.1	1.625	41.3	1.50	38.1	.075	1.9	.75	19.1	5/8	M16	8	10.9

* For tightening torque information, see Pp.121 and 122.

CB-1180 Series

Part Dimension

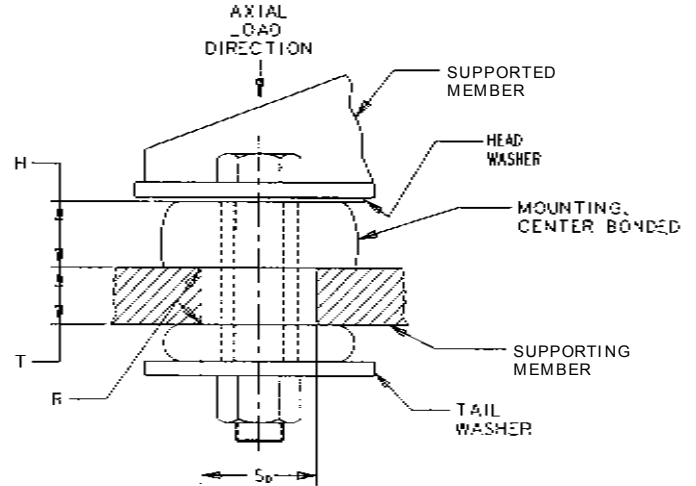
Figure 1



Specifications and Dimensions: Table 2

Installation View

Figure 2



CB-1180 Series

Washer Part Numbers and Dimensions: Table 3

Part Number	Head Washer	O.D.		I.D.		Thk.		Tail Washer	O.D.		I.D.		Thk.	
		in	mm	in	mm	in	mm		in	mm	in	mm	in	mm
CB-1180-1	J-2049-68	2.88	73.2	.66	16.8	.125	3.2	J-2049-70	3.50	88.9	.64	16.3	.19	4.8
CB-1180-2	J-2049-68	2.88	73.2	.66	16.8	.125	3.2	J-2049-70	3.50	88.9	.64	16.3	.19	4.8

Mounts and washers only supplied by Lord.