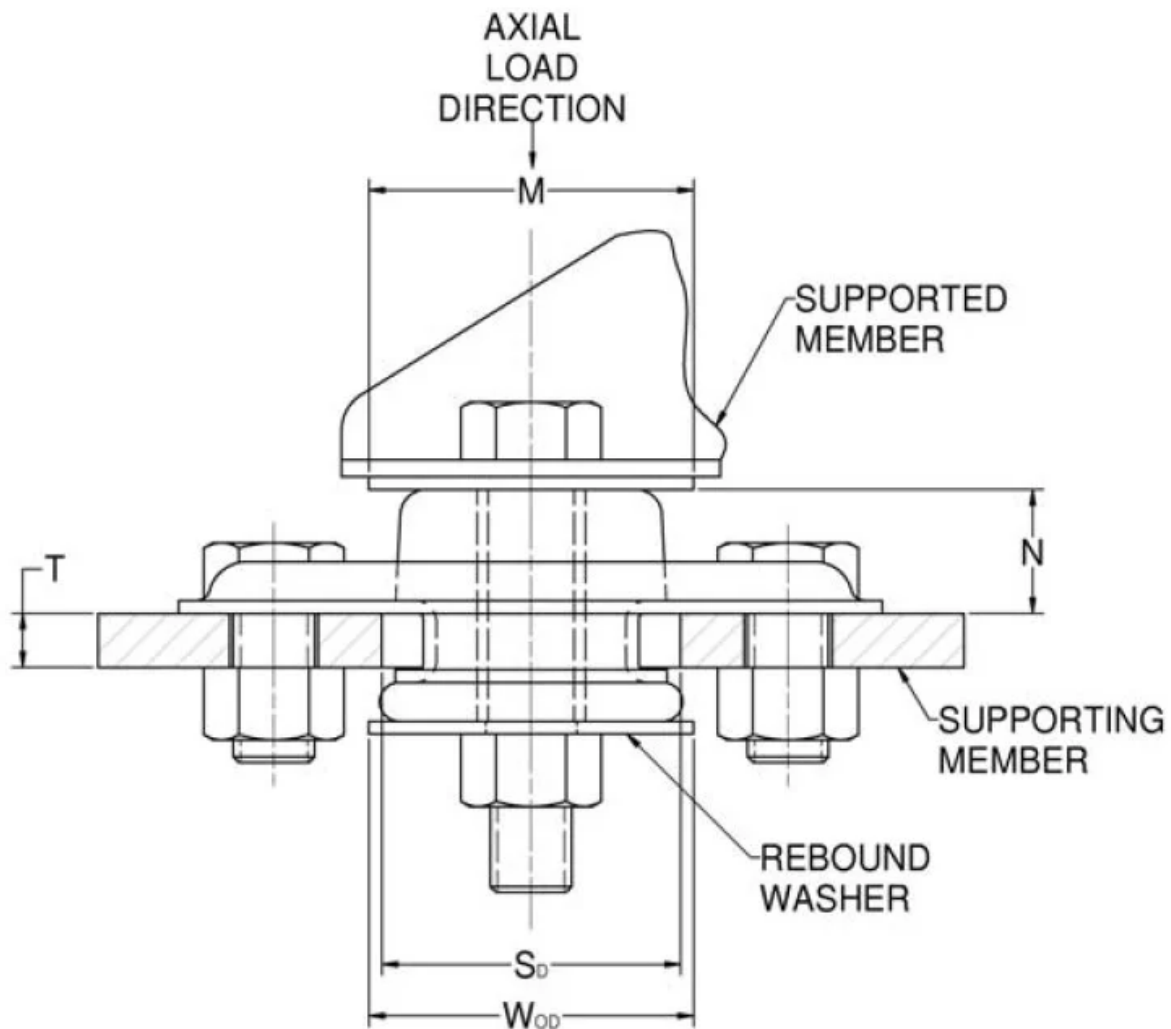
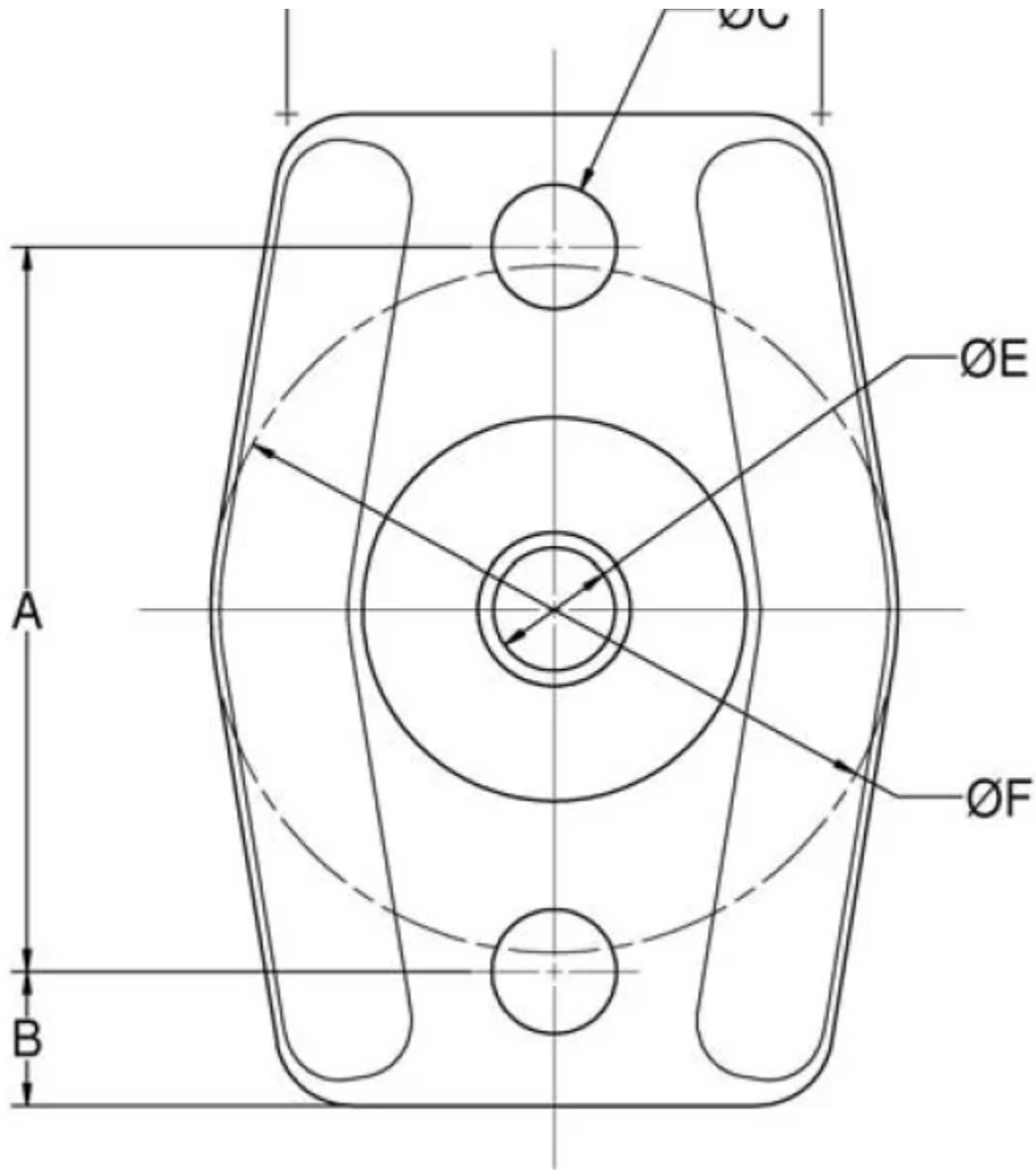


# CBA20-300-50

in Center Bonded Mounts - CBA-50 Series





Center Bonded Mounts isolate vibration, control shock and reduce noise due to structure borne vibrations.

Available in a full range of rated load capacities and able to withstand shock loads of 10 g's, these mounts effectively protect equipment and improve operator comfort. They are ideal for automotive, marine, railroad and industrial markets.

Center Bonded Mounts provide flexible suspension systems for mobile, transport-mounted or portable equipment. Typical applications include engines, cabs, fuel tanks, pumps, air conditioning units, compressors and industrial machinery.

Mount & Washer only furnished by Lord.

- Vibration isolation in all directions.
- Noise attenuation.
- Easy installation because of one-piece design.
- Low-cost installation.

- Shock protection in all directions provided by cushioned snubbing, no metal-to-metal bottoming.
- Standard sizes available from stock.
- Space-saving size.
- Captive installation after overload failure when recommended bolt, washer and nut are used.
- Accommodate English and Metric bolts.

Center Bonded Mounts isolate vibration, control shock and reduce noise due to structure borne vibrations.

Available in a full range of rated load capacities and able to withstand shock loads of 10 g's, these mounts effectively protect equipment and improve operator comfort. They are ideal for automotive, marine, railroad and industrial markets.

Center Bonded Mounts provide flexible suspension systems for mobile, transport-mounted or portable equipment. Typical applications include engines, cabs, fuel tanks, pumps, air conditioning units, compressors and industrial machinery.

## Specifications

A (IN)	3.75
B (IN)	1/2
D (IN)	2.25
F (IN)	3
F (MM)	76.2
H (IN)	
H (MM)	
MATERIAL	Low Carbon Steel
AXIAL STATIC SPRING RATE (LBS/IN)	2500
AXIAL STATIC SPRING RATE (N/MM)	438
I (IN)	2

RADIAL STATIC SPRING RATE (N/MM)	613
THICKNESS (IN)	0.125
THICKNESS (MM)	3.2
MAX. AXIAL STATIC LOAD RATING AT DEFLECTION (LBS AT IN)	300 at 0.12
MAX. AXIAL STATIC LOAD RATING AT DEFLECTION (N AT MM)	1334 at 3.0
MIN. I.D. (E) (IN)	0.525
MIN. I.D. (E) (MM)	13.3
MAX. I.D. (E) (IN)	0.54
MAX. I.D. (E) (MM)	13.7
O.D. (E) (IN)	0.75
O.D. (E) (MM)	19
J (IN)	1.45
J (MM)	36.8
K (IN)	1.92
K (MM)	48.8
PRODUCT TYPE	Mounts
MANUFACTURER	Lord Corporation
SERIES	CBA-50
MAX. AXIAL STATIC LOAD AT DEFLECTION (LBS AT IN)	300 at 0.12
MAX. AXIAL STATIC LOAD AT DEFLECTION (N AT MM)	1334 at 3.0
SD (IN)	2

I.D. (IN)	0.53
I.D. (MM)	13.5
RECOMMENDED STEEL WASHER	J-2049-52
O.D. (IN)	
O.D. (MM)	
APPLICATION ENGINEERING ASSISTANCE	Frequently, vibration isolation problems require a system engineering analysis. Lord has the computer capability, as well as specialized programs, for analyzing engine/ transmission combinations. The output from this analysis is a mounting proposal which optimizes performance over the complete range of operating speeds. This service is available to you upon request.
APPLICABLE METAL BRACKET	Y-30266-4-1
MIN. DIAMETER (C) (IN)	0.404
MIN. DIAMETER (C) (MM)	10.3
MAX. DIAMETER (C) (IN)	0.412
MAX. DIAMETER (C) (MM)	10.5
MIN. (M) (IN)	2.38
MIN. (M) (MM)	60.5
N (IN)	0.79
N (MM)	20.1
MIN. (T) (IN)	0.25
MIN. (T) (MM)	6.4
MAX. (T) (IN)	0.38
MAX. (T) (MM)	9.7

