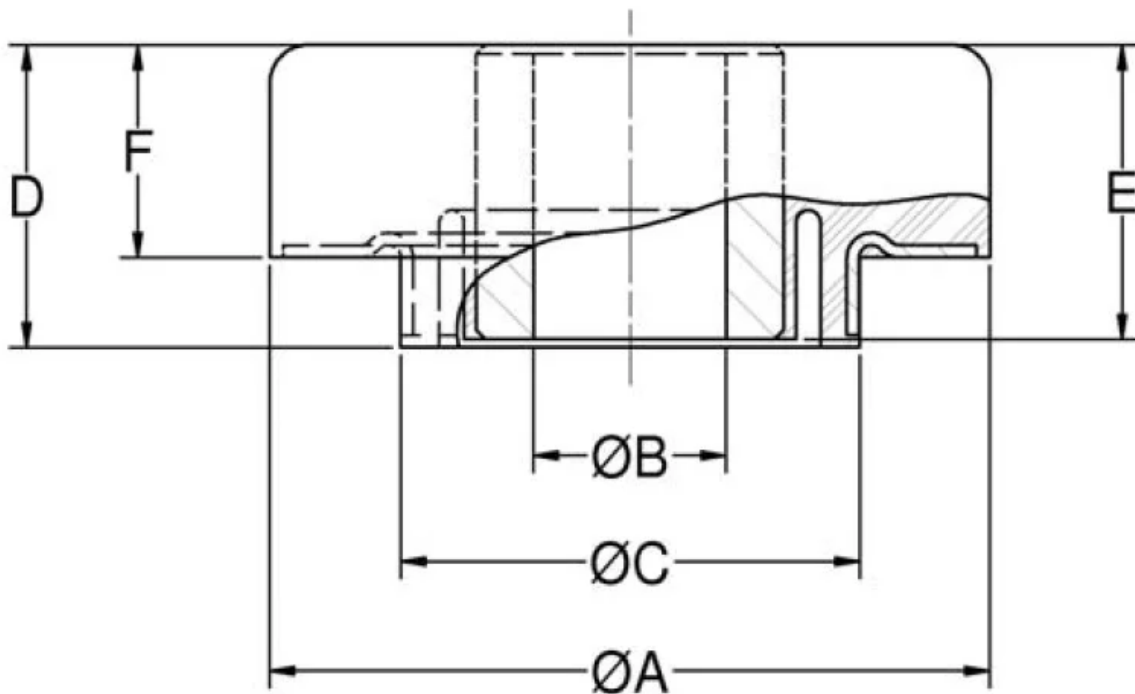


# CBB35-2-9

in Two-Piece Mounts - CBB & CBC Series



Two-Piece Mounts are designed for applications involving severe dynamic forces in the static load direction, as well as the rebound direction.

Travel is limited in both directions by rubber in compression which provides snubbing.

These mounts are designed to support engines, cabs and accessory units, accommodate frame racking and twisting while isolating vibration and absorbing shock.

Typical applications for Two-Piece Mounts include on-highway, off-highway vehicles, construction and industrial machines.

These loads are for on-highway and general industrial uses. For off-highway, use 90% of the load shown.

- Dynamically effective in all directions.

- High rebound capacity.
- Easy to install with common tools.
- Standard bolt torque assures proper assembly.
- Top and bottom parts alike, cannot be misassembled.
- Fail-safe assembly.
- Sized for English and Metric bolts.
- Long dependable service life.
- Economical.

## Specifications

A (IN)	3.5
B (IN)	0.938
C (IN)	2.24
D (IN)	1.48
E (IN)	1.44
F (IN)	1.04
F (MM)	26.4
H (IN)	
H (MM)	
MATERIAL	Low Carbon Steel
G (IN)	0.94
G (MM)	23.9
COLOR CODE	
MAX. AXIAL STATIC LOAD RATING AT DEFLECTION (LBS AT IN)	940 at 0.05
MAX. AXIAL STATIC LOAD RATING AT	4180 at 1.27

PRODUCT TYPE	Mounts
MANUFACTURER	Lord Corporation
SERIES	Armored Series
APPLICABLE STEEL WASHER	J-2049-72
FIGURE	1 & 2
MAX. AXIAL STATIC LOAD AT DEFLECTION (LBS AT IN)	940 at 0.05
MAX. AXIAL STATIC LOAD AT DEFLECTION (N AT MM)	4180 at 1.27
RECOMMENDED BOLT GRADE OR CLASS (SAE J429)	8
RECOMMENDED BOLT GRADE OR CLASS (SAE J1199)	10.9
SD (IN)	2.26
SD (MM)	57.5
T (IN)	1
T (MM)	25.4
WD (IN)	4
WD (MM)	101.6
WT (IN)	0.134
WT (MM)	3.4
I.D. (IN)	0.95
I.D. (MM)	24.1