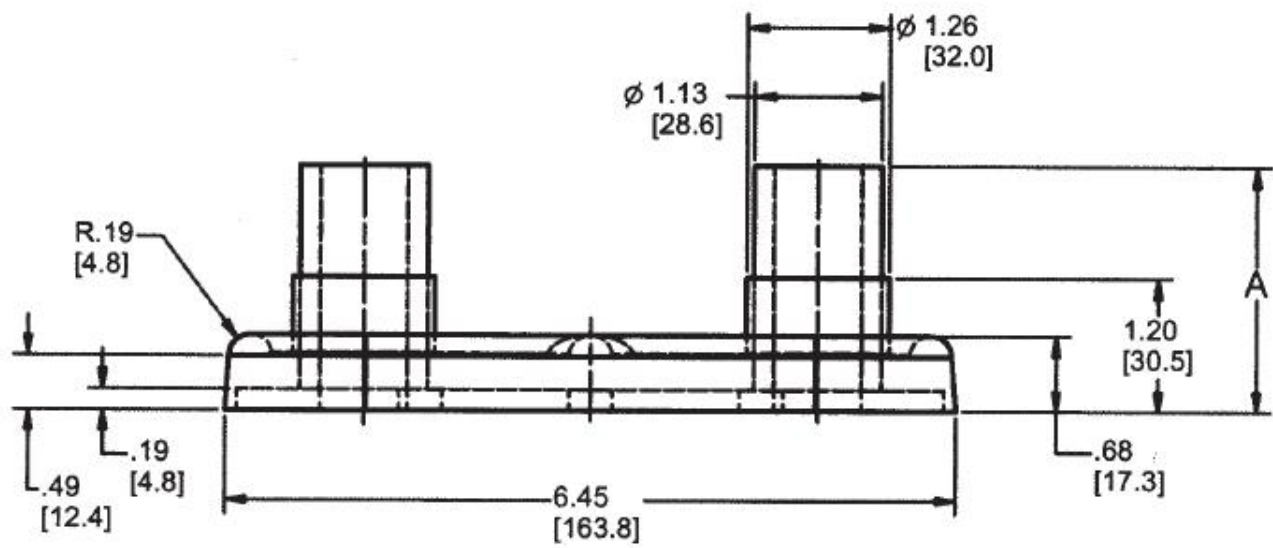
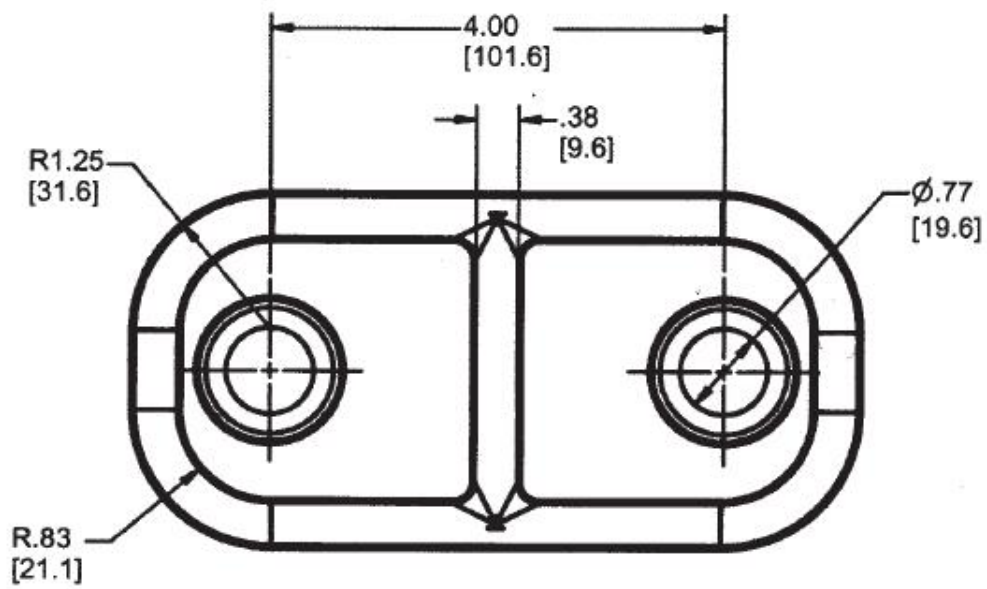
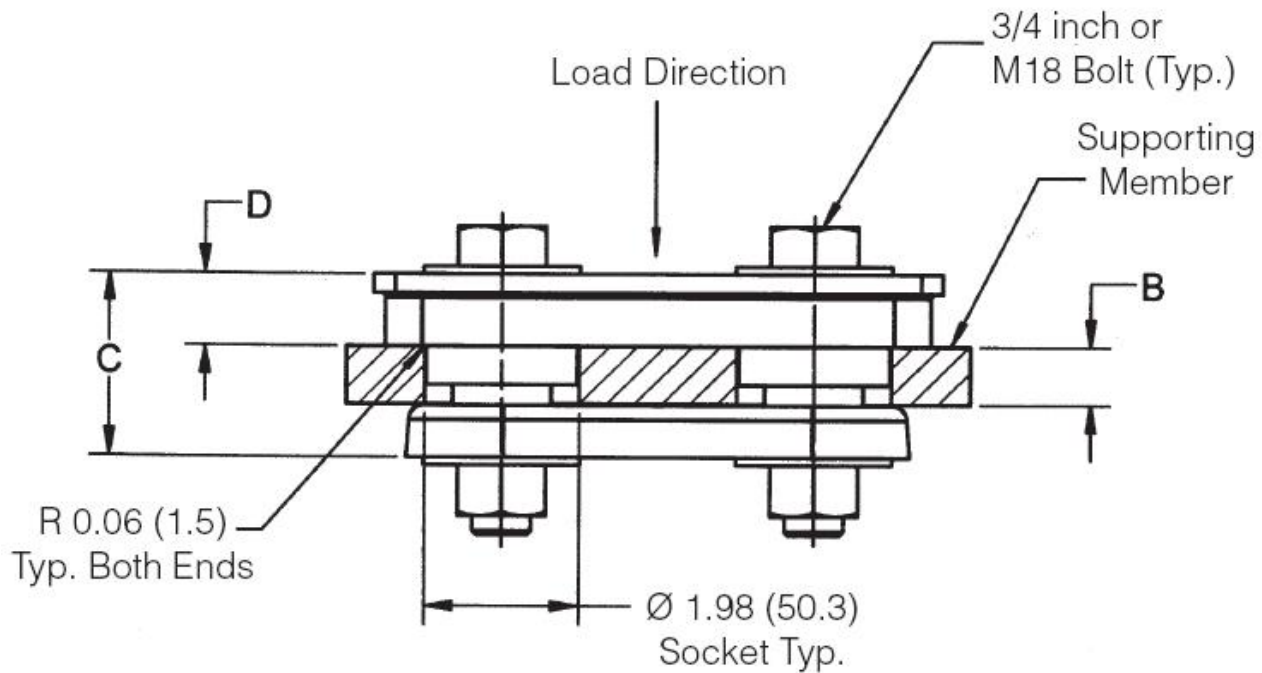


J-21246-12

in Binocular Engine Mounts







LORD Binocular Engine Mounts are designed for applications involving severe dynamic forces in the static load direction, as well as the rebound direction. Travel is limited in both directions by rubber in compression which provides snubbing.

These mounts are designed as front engine mounts, and accommodate frame racking and twisting while isolating vibration and absorbing shock.

Typical applications for Binocular / Split Engine mounts include on-highway, off highway and construction vehicles.

Features and Benefits

- Dynamically effective in all directions
- Prevent mechanical transmission of noise
- Accomodate misalignment and distortion
- High Rebound capacity
- Easy to install with common tools
- Standard bolt torque assure proper assembly
- Fail Safe Assembly
- Long Dependable Service Life

Specifications

TOTAL HEIGHT (C) (IN)	2.66

SOCKET THICKNESS (B) (IN)	0.63
SOCKET THICKNESS (B) (MM)	16
OVERALL HEIGHT (C) (IN)	2.66
OVERALL HEIGHT (C) (MM)	67.6
UPPER PART THICKNESS (D) (IN)	1.34
UPPER PART THICKNESS (D) (MM)	34
RATED VERTICAL LOAD (IN)	1000
RATED VERTICAL LOAD (MM)	4448
DEFLECT @ RATED LOAD (IN)	0.054
DEFLECT @ RATED LOAD (MM)	1.37
VERTICAL STIFFNESS (LBS/IN)	17647
VERTICAL STIFFNESS (N/MM)	3090
LATERAL STIFFNESS (IN)	1400
LATERAL STIFFNESS (MM)	245
PRODUCT TYPE	
MANUFACTURER	