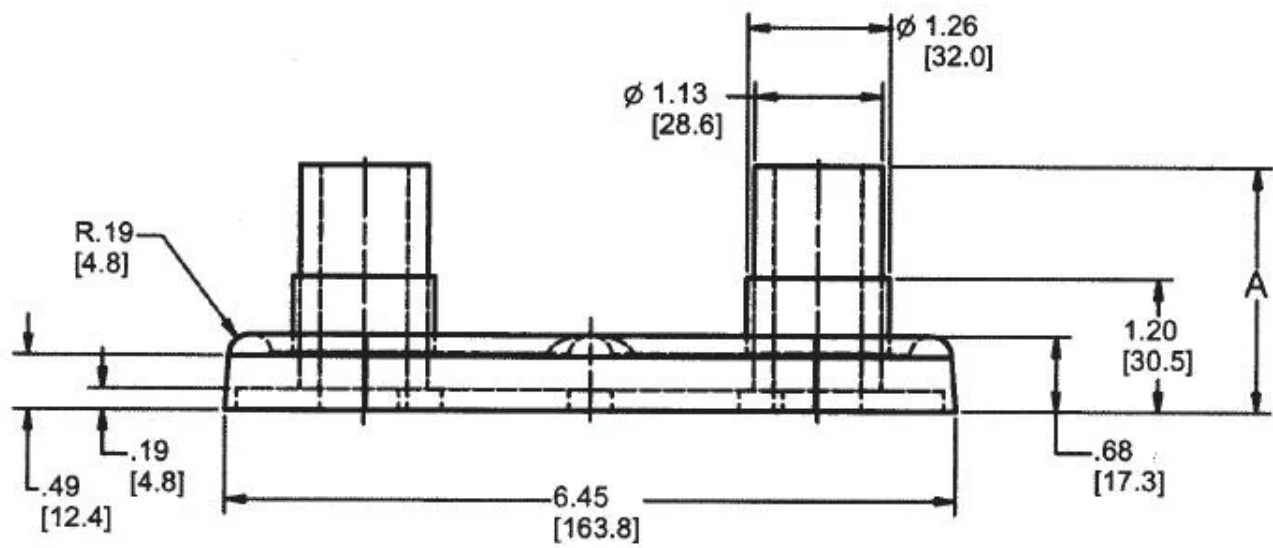
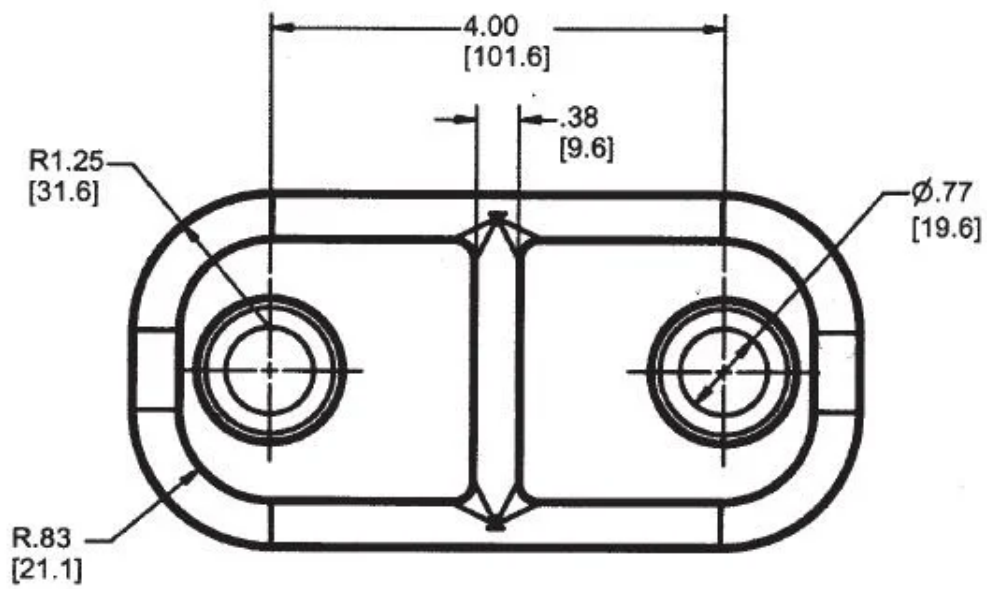
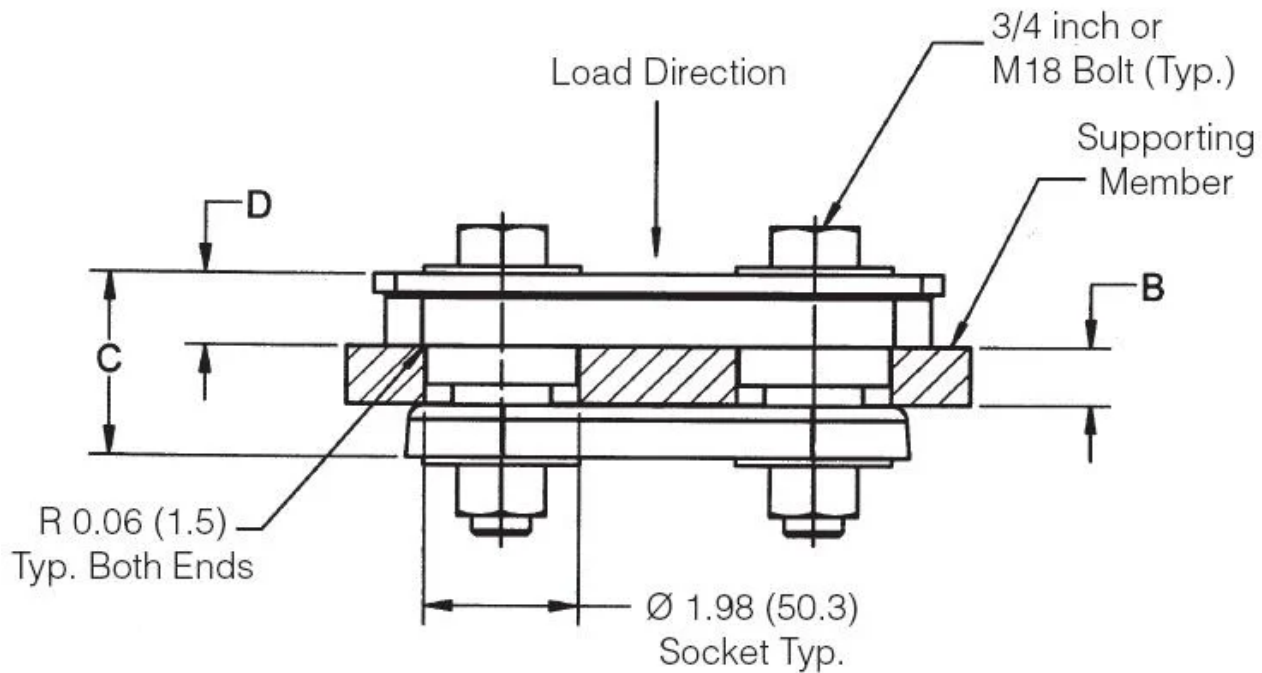


J-21246-13

in Binocular Engine Mounts







LORD Binocular Engine Mounts are designed for applications involving severe dynamic forces in the static load direction, as well as the rebound direction. Travel is limited in both directions by rubber in compression which provides snubbing.

These mounts are designed as front engine mounts, and accommodate frame racking and twisting while isolating vibration and absorbing shock.

Typical applications for Binocular / Split Engine mounts include on-highway, off highway and construction vehicles.

Features and Benefits

- Dynamically effective in all directions
- Prevent mechanical transmission of noise
- Accomodate misalignment and distortion
- High Rebound capacity
- Easy to install with common tools
- Standard bolt torque assure proper assembly
- Fail Safe Assembly
- Long Dependable Service Life

Specifications

TOTAL HEIGHT (C) (IN)	2.39

SOCKET THICKNESS (B) (IN)	0.75
SOCKET THICKNESS (B) (MM)	19
OVERALL HEIGHT (C) (IN)	2.39
OVERALL HEIGHT (C) (MM)	60.7
UPPER PART THICKNESS (D) (IN)	0.945
UPPER PART THICKNESS (D) (MM)	24
RATED VERTICAL LOAD (IN)	1500
RATED VERTICAL LOAD (MM)	6672
DEFLECT @ RATED LOAD (IN)	0.62
DEFLECT @ RATED LOAD (MM)	1.58
VERTICAL STIFFNESS (LBS/IN)	24000
VERTICAL STIFFNESS (N/MM)	4203
LATERAL STIFFNESS (IN)	3300
LATERAL STIFFNESS (MM)	578
PRODUCT TYPE	
MANUFACTURER	