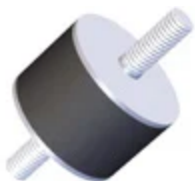
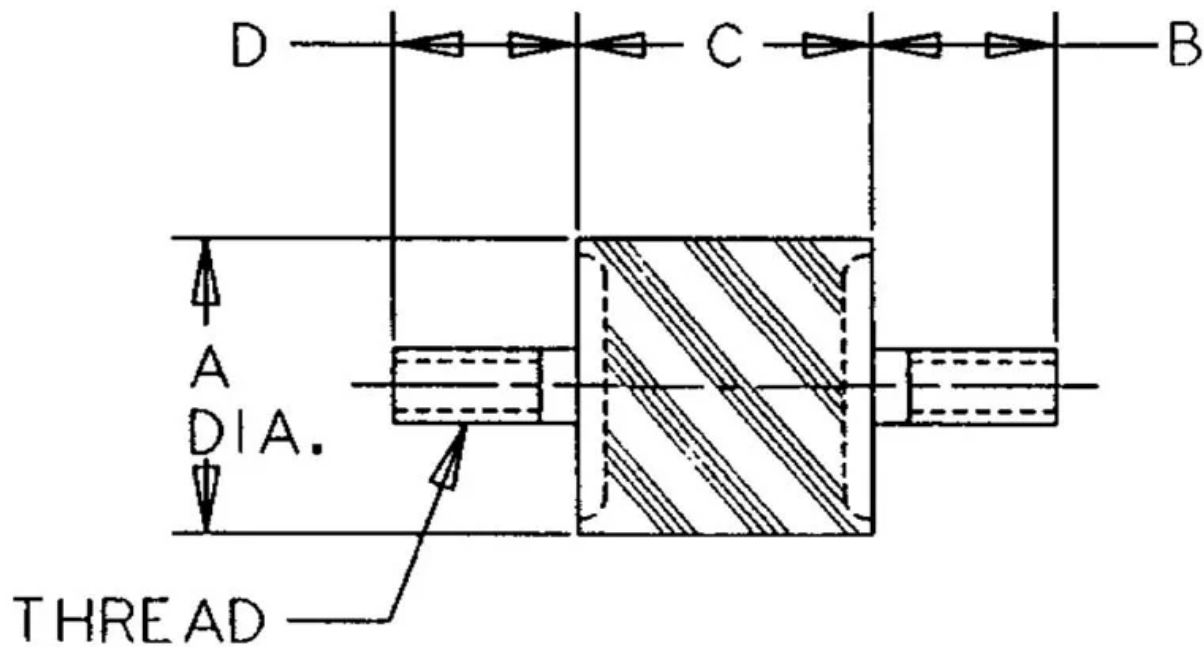


# VMA-1075A

in Sandwich Mounts (Metric Thread) Type 1



- Economical.
- Compact and lightweight.
- Easy to install.
- Maintenance-free.
- Three size groups: small, medium and large.
- Unitized construction.

Constructed with high-strength bonds and specially compounded elastomers, these mounts provide high load-carrying capacity and assure long life.

The simple design and unitized construction provide low-cost mounting systems which are compact, lightweight, easy to install and maintenance-free.

These mounts are available in three size groups to suit a variety of applications. Small Rubber Flex Bobbin Sandwich Mounts are available in metric and standard (UNC) threads.

Typical applications for Rubber Flex Bobbin Sandwich Mounts include business machines, motorcycles, heating, ventilating and air conditioning equipment, light motors, appliances, shipping containers, feeders, compactors and vibratory rollers.

## Specifications

COMPRESSION STATIC LOAD (LBS)	1270
COMPRESSION STATIC LOAD (N)	5650
COMPRESSION - SPRING RATE KC (LBS/IN)	3163
COMPRESSION - SPRING RATE KC (N/MM)	562
SHEAR STATIC LOAD (LBS)	423
SHEAR STATIC LOAD (N)	1883
SHEAR - SPRING RATE KS (LBS/IN)	671
SHEAR - SPRING RATE KS (N/MM)	124
A (IN)	4
B (IN)	1.77
C (IN)	3
D (IN)	1.77
THREAD SIZE	M16
DUROMETER	57
ELASTOMER	Natural Rubber
THREAD TYPE	Metric

TYPE	1
GRADE PER SAE J429	4.6