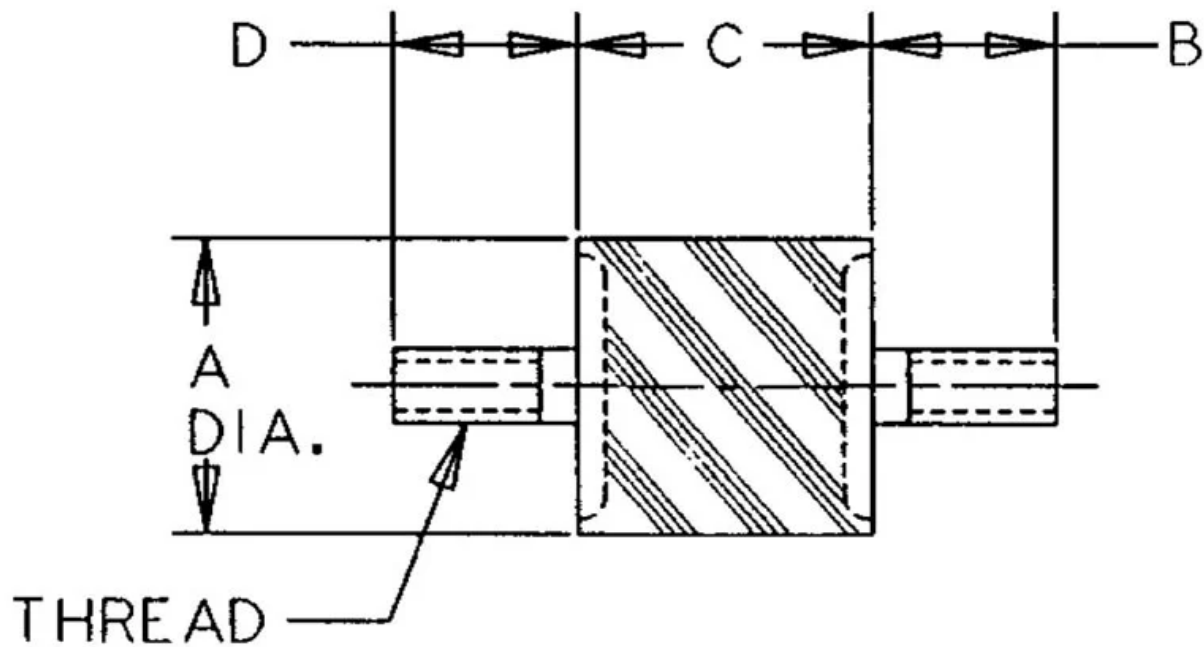


VMA-2008K

in Sandwich Mounts (Metric Thread) Type 1



- Economical.
- Compact and lightweight.
- Easy to install.
- Maintenance-free.
- Three size groups: small, medium and large.
- Unitized construction.

Constructed with high-strength bonds and specially compounded elastomers, these mounts provide high load-carrying capacity and assure long life.

The simple design and unitized construction provide low-cost mounting systems which are compact, lightweight, easy to install and maintenance-free.

These mounts are available in three size groups to suit a variety of applications. Small Rubber Flex Bobbin Sandwich Mounts are available in metric and standard (UNC) threads.

Typical applications for Rubber Flex Bobbin Sandwich Mounts include business machines, motorcycles, heating, ventilating and air conditioning equipment, light motors, appliances, shipping containers, feeders, compactors and vibratory rollers.

Specifications

COMPRESSION STATIC LOAD (LBS)	207
COMPRESSION STATIC LOAD (N)	925
COMPRESSION - SPRING RATE KC (LBS/IN)	8690
COMPRESSION - SPRING RATE KC (N/MM)	1541
SHEAR STATIC LOAD (LBS)	308
SHEAR STATIC LOAD (N)	272
SHEAR - SPRING RATE KS (LBS/IN)	135
SHEAR - SPRING RATE KS (N/MM)	69
A (IN)	0.79
B (IN)	0.59
C (IN)	0.31
D (IN)	0.59
THREAD SIZE	M6
DUROMETER	68
ELASTOMER	Natural Rubber
THREAD TYPE	Metric

TYPE	1
GRADE PER SAE J429	4.6