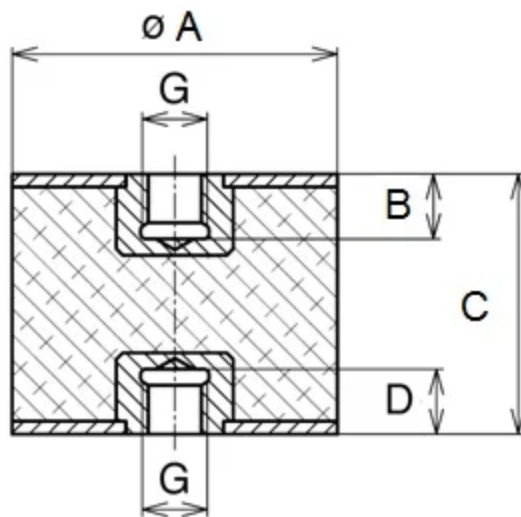
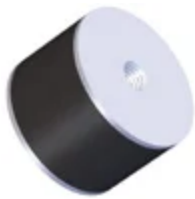


# VMC-5050M

in Sandwich Mounts (Metric Thread) Type 4



RPM Rubber Flex Sandwich Mounts are designed to protect equipment and machinery against damaging vibration. This family of mounts has excellent capacity for energy control.

Constructed with high-strength bonds and specially compounded elastomers, these mounts provide high load-carrying capacity and assure long life.

The simple design and unitized construction provide low-cost mounting systems which are compact, lightweight, easy to install and maintenance-free.

Typical applications for Rubber Flex Sandwich Mounts include business machines, motorcycles, heating, ventilating and air conditioning equipment, light motors, appliances, shipping containers, feeders, compactors and vibratory rollers.

|                                       |                |
|---------------------------------------|----------------|
| COMPRESSION STATIC LOAD (LBS)         | 500            |
| COMPRESSION STATIC LOAD (N)           | 2223           |
| COMPRESSION - SPRING RATE KC (LBS/IN) | 73             |
| COMPRESSION - SPRING RATE KC (N/MM)   | 411            |
| SHEAR STATIC LOAD (LBS)               | 167            |
| SHEAR STATIC LOAD (N)                 | 741            |
| SHEAR - SPRING RATE KS (LBS/IN)       | 17             |
| SHEAR - SPRING RATE KS (N/MM)         | 93             |
| A (IN)                                | 2              |
| B (IN)                                | 0.39           |
| C (IN)                                | 2              |
| D (IN)                                | 0.39           |
| THREAD SIZE                           | M10            |
| DUROMETER                             | 68             |
| ELASTOMER                             | Natural Rubber |
| PRODUCT TYPE                          |                |
| MANUFACTURER                          | RPM Mechanical |
| TYPE                                  | 4              |
| GRADE PER SAE J429                    |                |