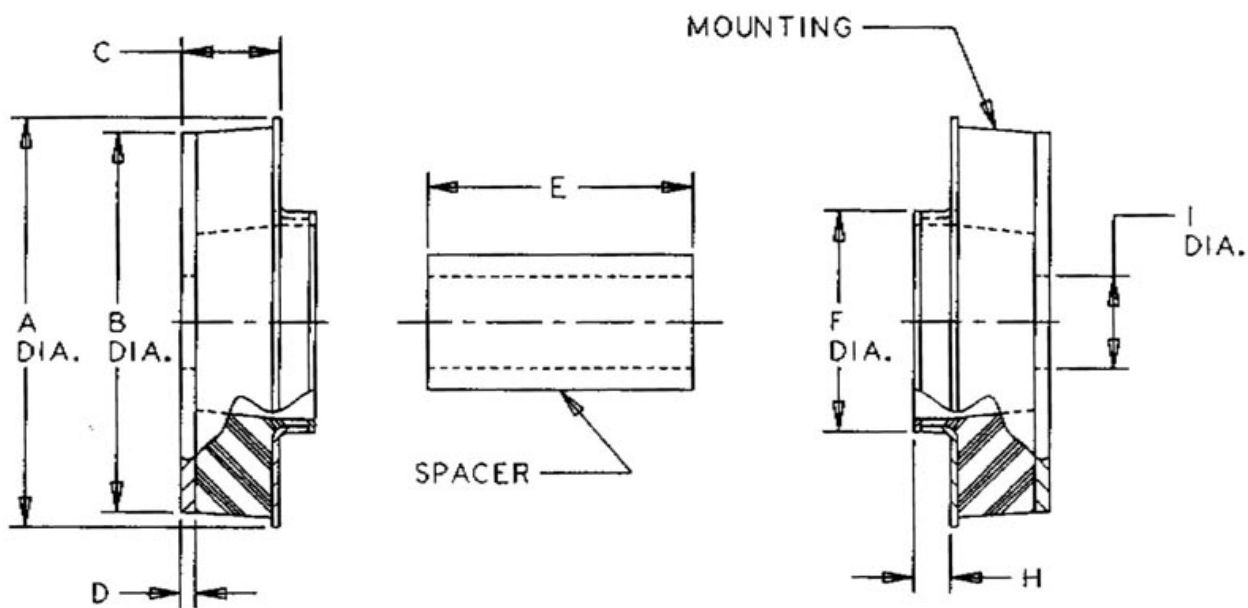


Y-30100-7-1

in Two-Piece Mounts - SSB Series



Two-Piece Mounts are designed for applications involving severe dynamic forces in the static load direction, as well as the rebound direction. Travel is limited in both directions by rubber in compression which provides snubbing.

These mounts are designed to support engines, cabs and accessory units, accommodate frame racking and twisting while isolating vibration and absorbing shock.

Typical applications for Two-Piece Mounts include on-highway, off-highway vehicles, construction and industrial machines.

These loads are for on-highway and general industrial uses. For off-highway, use 80% of the load shown.

- Dynamically effective in all directions.
- Prevent mechanical transmission of noise.
- Accommodate misalignment and distortion.
- High rebound capacity.

- Top and bottom parts alike, cannot be misassembled.
- Fail-safe assembly.
- Sized for English and Metric bolts.
- Long dependable service life.
- Economical.

Specifications

A (IN)	2.22 2.62
B (IN)	2
C (IN)	0.81
D (IN)	0.125
E (IN)	1.81
F (IN)	1.38
F (MM)	
H (IN)	
H (MM)	
MATERIAL	Low Carbon Steel
AXIAL STATIC SPRING RATE (LBS/IN)	4970 8120 11000 17900
AXIAL STATIC SPRING RATE (N/MM)	890 1430 1930 3215
I (IN)	0.51
I (MM)	12.9
MAX. AXIAL STATIC LOAD RATING AT DEFLECTION (LBS AT IN)	185 at 0.035 300 at 0.04 400 at 0.035 685 at 0.04
RECOMMENDED BOLT SIZE (IN)	0.5
RADIAL STATIC SPRING RATE (LBS/IN)	560 910 1370 2230

K (MM)	52.3
PRODUCT TYPE	Mounts
MANUFACTURER	Lord Corporation
TYPE	Spacer
SERIES	
MAX. AXIAL STATIC LOAD AT DEFLECTION (LBS AT IN)	185 at 0.035 300 at 0.04 400 at 0.035 685 at 0.04
MAX. AXIAL STATIC LOAD AT DEFLECTION (N AT MM)	825 at 0.90 1335 at 1.02 1780 at 0.90 3050 at 1.02
RECOMMENDED BOLT GRADE OR CLASS (SAE J429)	2
RECOMMENDED BOLT GRADE OR CLASS (SAE J1199)	5.8
SD (IN)	1.4
SD (MM)	35.6
T (IN)	0.625
T (MM)	15.9
MOG P/N	
SPACER P/N	